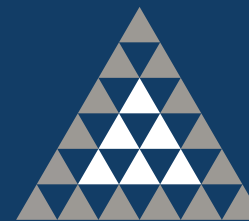




Waterway House

Cape Town



ATTERBURY

It's a matter of association



Contents

Introduction <i>Atterbury</i>	4
Introduction <i>Waterway House</i>	6
Income / Expense <i>Statement</i>	8
Photographic <i>Library</i>	10
Locality <i>Map</i>	12
Architectural <i>Plans</i>	14



Introduction

Over 25 years, Atterbury has developed and managed prime commercial, retail and residential property across South Africa, the rest of the African Continent and Europe. Atterbury Property Holdings is the operational company in the Atterbury Group. This holding company consists of development, asset management, leasing and corporate services divisions.

Atterbury Property Holdings has always believed in development and meticulous asset management as a catalyst for economic and societal growth and improvement. Creative, well-managed spaces, featuring elegant architecture within safe and accessible environments are hallmarks of all Atterbury developments.



Waterway House
Cape Town

Waterway House, one of the most desirable addresses in the Cape Town City bowl. Located at the gateway entrance to the Victoria & Alfred Waterfront, this prime site has visibility to all vehicles exiting the N2 on Nelson Mandela Boulevard.

Prime Location - V&A Waterfront

Nearby attractions include the Cape Town International Convention Centre, extensive variety of Hotels and Apartments, Theatres and of course the V & A Waterfront and its facilities, all within walking distance. Atterbury is proud to have played a role in the successful relocation of British Tobacco South Africa from its Stellenbosch head office of 25 years, to the prestigious V & A Waterfront and the new Waterway House.

GLA Offices	8 102m ²
Basement Parking Bays	154 bays
Lease Expiry	31 December 2025

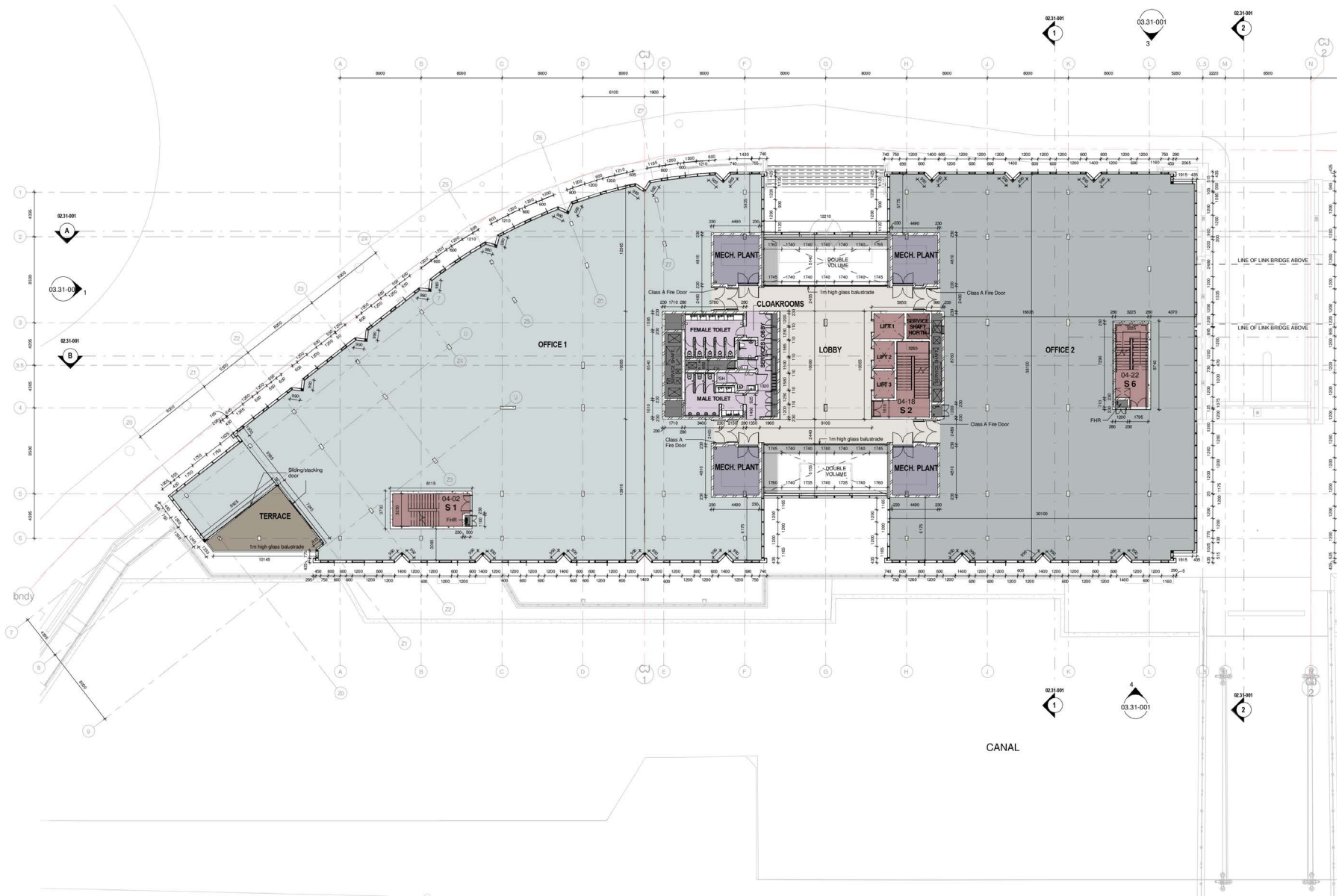
Photographic Library



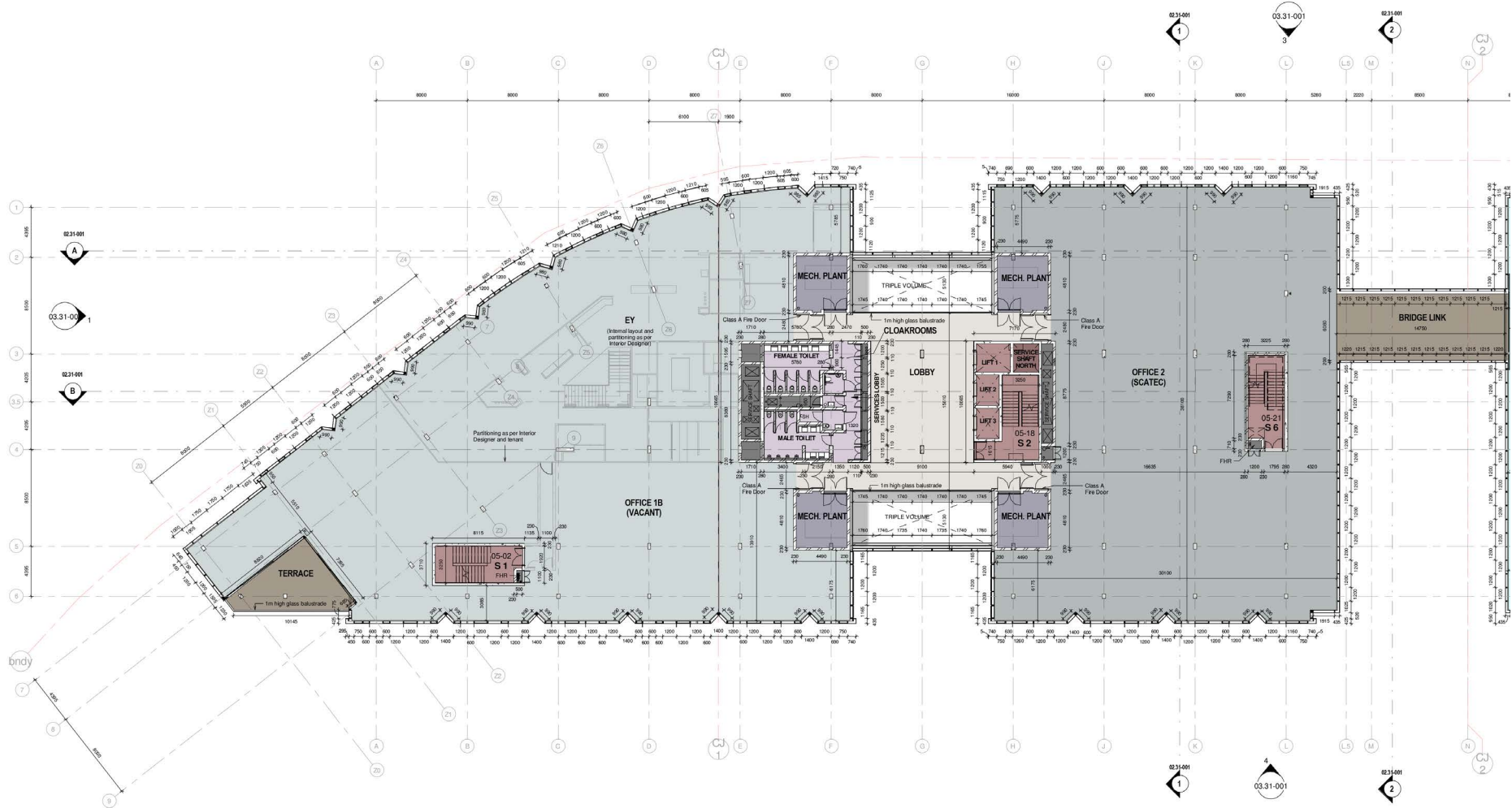
Locality



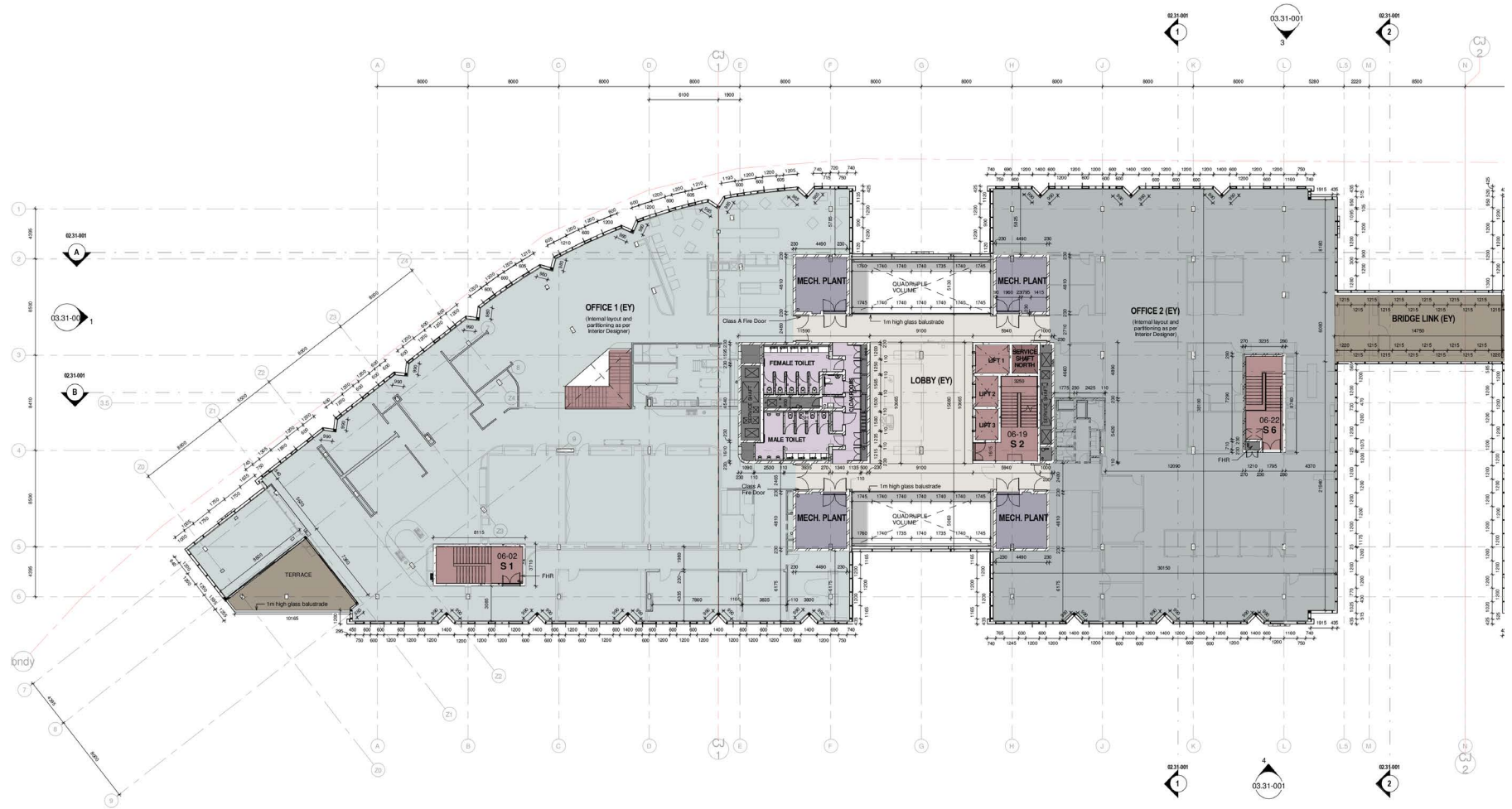
Plans



/ First Floor



/ Second Floor

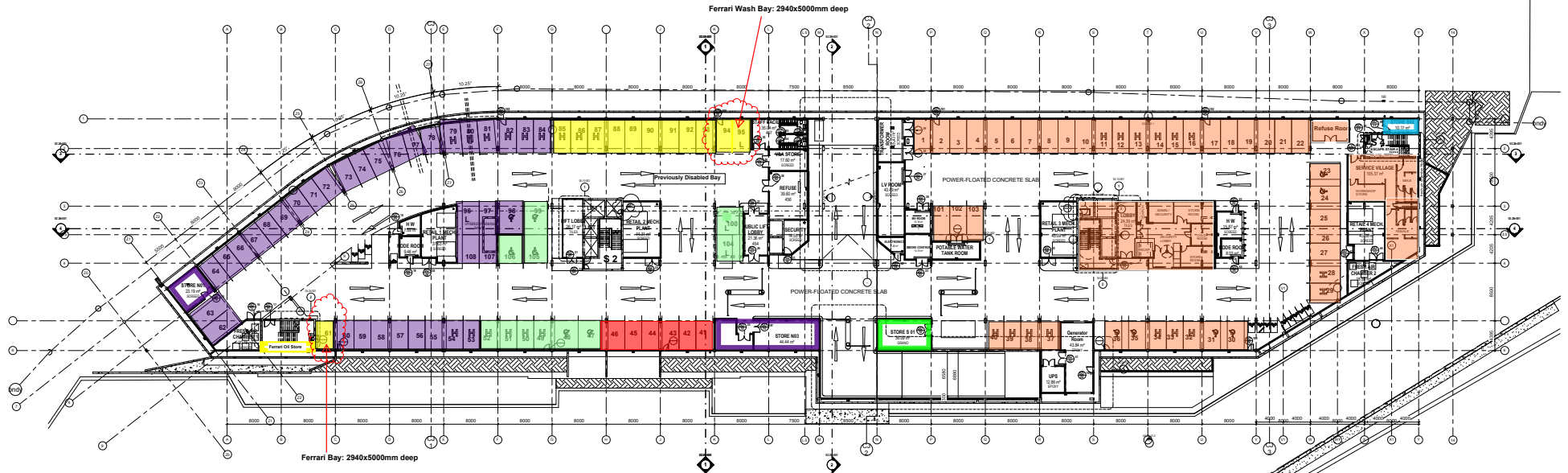


/Third Floor

BASEMENT P1

Parking Arrangement as Agreed from 31st March 2017:

Rev	Description	Date
1	Issue for approval	15/03/17
2	As per comments	15/03/17
3	As per comments	15/03/17
4	As per comments	15/03/17
5	As per comments	15/03/17
6	As per comments	15/03/17
7	As per comments	15/03/17



NOTES: Basement P1

	BAT	43 Bays
	Retail	11 Bays
	Minotti	6 Bays
	EY	36 Bays
	Ferrari	12 Bays
	Total Bays on P1	108 Bays

Total number of bays on both P1(108) & P2(189): 297 Bays



dhk architects (Pty) Ltd
 3 Commercial Centre, Cape Town
 Tel: +27 (0) 21 421 6033
 Fax: +27 (0) 21 421 6070
 Email: architects@dhk.co.za
 Reg No: 1999/002907

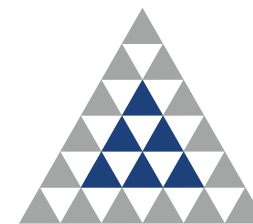
WATERWAY HOUSE
 ERF 173716, a portion of ERF 149294
 V&A WATERFRONT, CAPE TOWN
 V&A WATERFRONT COMPANY (PTY) LTD

North & South
 Reference Plan
 Basement P1
 07.080 | 01.21-003 | 7
 07/28/15 | 1 : 200 @ A0

/ Basement parking 1

Die Klubhuis, 2nd Floor, Cnr 18th Street and Pinaster Ave, Hazelwood, 0081
Postnet Suite 205, Private Bag x20009, Garsfontein, Pretoria, 0042

+27 12 471 1600 www.atterbury.co.za



ATTERBURY

It's a matter of association