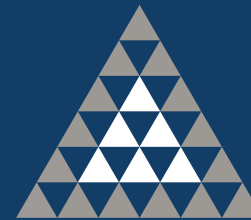




The Club

Pretoria



ATTERBURY

It's a matter of association



Contents

<i>Introduction Atterbury</i>	4
<i>Introduction The Club</i>	6
<i>Photographic Library</i>	8
<i>Locality Map</i>	12
<i>Architectural Plans</i>	16



Introduction

Over 25 years, Atterbury has developed and managed prime commercial, retail and residential property across South Africa, the rest of the African Continent and Europe. Atterbury Property Holdings is the operational company in the Atterbury Group. This holding company consists of development, asset management, leasing and corporate services divisions.

Atterbury Property Holdings has always believed in development and meticulous asset management as a catalyst for economic and societal growth and improvement. Creative, well-managed spaces, featuring elegant architecture within safe and accessible environments are hallmarks of all Atterbury developments.

Atterbury is renowned as a leading industrial developer evident by winning consecutive SAPOA awards for best industrial development in South Africa from 2015 to 2017 for Westcon, Hilti and Amrod at Waterfall City in Gauteng.



*The Club
Pretoria*



The Club Precinct

The Club Precinct in Pretoria is one of Atterbury's flagship developments consisting of 6 state of the art buildings operating as one modern and vibrant node. It is home to compelling retail, restaurants and offices in The Club, Club One, Club Advocates' Chambers, Club Medical and 15 residential units.

Photographic Library



Die Klubhuis



Club Retail



Club One



Club One





Club Precinct

Club Precinct



Locality



CLUB PRECINCT A MIXED-USE PRECINCT



LOCATED ACROSS THE ROAD FROM
PRETORIA COUNTRY CLUB - WHERE THE
CLUB DRAWS INSPIRATION FOR ITS NAME

01

DIE KLUBHUIS: GYM & OFFICES

02

RESIDENTIAL

03

CLUB ADVOCATES CHAMBERS

04

CLUB SURGICAL CENTRE

05

CLUB RETAIL

06

CLUB ONE : OFFICES



CLUB PRECINCT

JOINING THE LIFESTYLE

These properties were acquired by Atterbury in 2007. Since then the area has been developed into a vibrant and upmarket mixed use precinct in the heart of Hazelwood.

The precinct comprises of more than 30 000m² of quality retail, restaurants, gym, office space and residential units.

CLUB ONE

This prestigious Office and restaurant building was designed and completed in 2011. The building comprises 4 Office floors with restaurants (Hudson's, Hogshead & Beefcakes) on the ground floor. Offices include Deloitte PTA, DNA outsourcing and MBT Petroleum.

DIE KLUBHUIS

Die Klubhuis completed in 2017 is an innovative design for a 3 000m² Planet Fitness gym, as well as a 3 000m² Office component, and an exclusive Brooklyn Optica on the corner. For convenience, this development includes two levels of secure Basement Parking.

CLUB ADVOCATES CHAMBERS

The building comprises of a 5 600m² advocate chamber, housing ± 120 advocates, with a mega basement spanning 2 levels.

CLUB SURGICAL CENTRE

The state of the art facility comprises of a 4 000m² medical Centre with a Dischem on the ground floor and exclusive tenants such as Spine Africa, Burger Radiologists, ENT's, Plastic Surgeon, Dermatologists, Dentist & a Day Hospital.

CLUB RETAIL

This is an exciting Retail Development offering exclusive dining and upmarket convenience stores, comparable to none other. This phase was completed in 2014 and includes a diverse tenant mix of well-known local retailers and bespoke stores as well as some office space on the upper levels. Woolworth's food, Life Grand Café, Hinterland, Paul Mitchell, Sorbet, Pachas, Khaleo and WorkSpace are all part of the exciting mix.

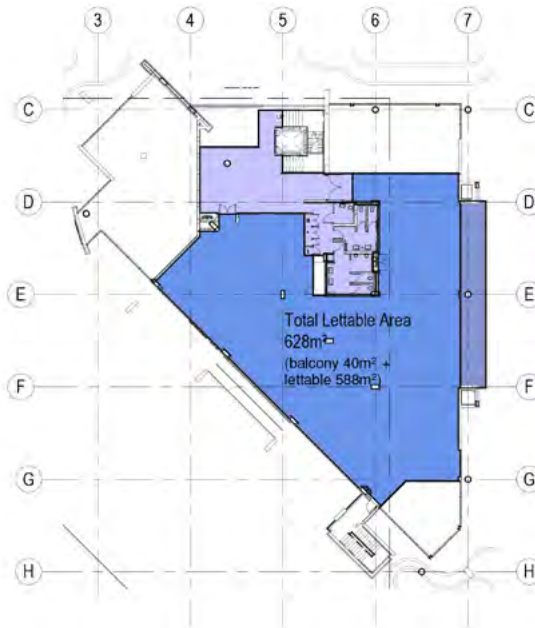
CLUB RESIDENTIAL

Structured parking and residential units along the north boundary of the development, creating a residential buffer between the Residential part of Hazelwood, and the Club Precinct. The development includes 15 luxury double storey residential units with dedicated parking in the adjoining parking structure.



THE CLUB ONE OFFICES

"LET" - GROUND FLOOR, FIRST FLOOR & SECOND FLOOR







Solet :082 564 3042
Johnny :082 453 2444
Zandri :082 772 8131

Die Klubhuis, 2nd Floor, Cnr 18th Street and Pinaster Ave, Hazelwood, 0081
Postnet Suite 205, Private Bag x20009, Garsfontein, Pretoria, 0042

+27 12 471 1600 www.atterbury.co.za



ATTERBURY

It's a matter of association