

**ATTERBURY**

*It's a matter of association*

RETAIL | HOTEL | **OFFICES** | RESIDENTIAL

**CONTENTS PAGE**

MACRO LOCALITY

MICRO LOCALITY

MASTERPLAN AND DEVELOPMENT DATA

ROAD UPGRADES / PUBLIC TRANSPORT

PRECINCT FEATURES

OFFICE DESIGNS & CONCEPTS



**MACRO LOCALITY**





MICRO LOCALITY









MASTER PLAN AND DEVELOPMENT DATA

PHASE	USE	AREA
01	OFFICE	4000m <sup>2</sup>
01	RETAIL	23 000 m <sup>2</sup>
02	RESIDENTIAL	1 000 units
02	OFFICE	110 000 m <sup>2</sup>
02	HOTEL	7 500 m <sup>2</sup>
02	HOSPITAL	20 000 m <sup>2</sup>
02	PRIVATE SCHOOLS	15 500 m <sup>2</sup>
02	TOWN HALL	3 500 m <sup>2</sup>
02	RESIDENTIAL	11 500 m <sup>2</sup>

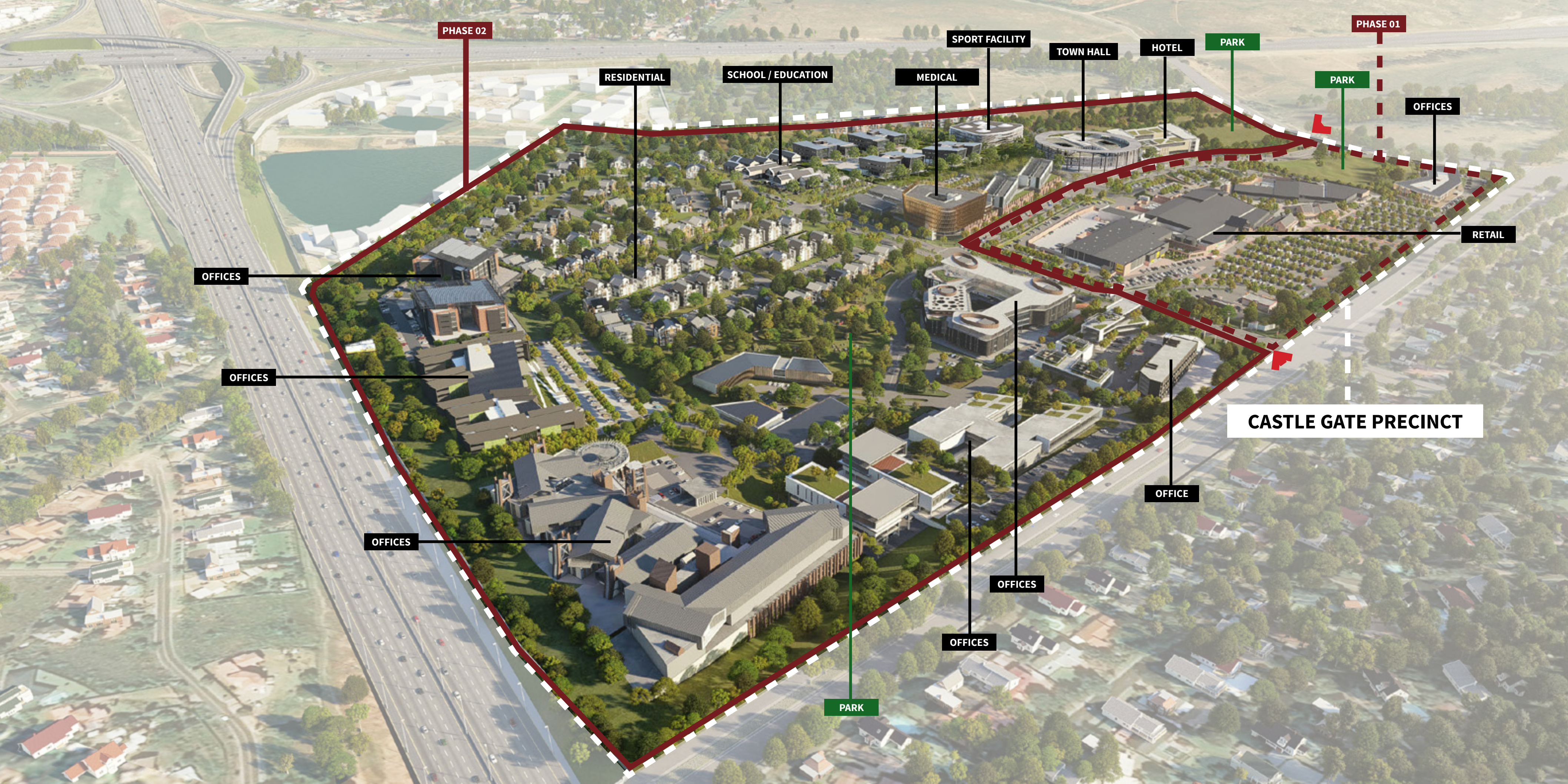


ROAD UPGRADES/ PUBLIC TRANSPORT

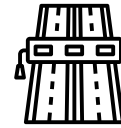


-  ROAD UPGRADE -*PHASE 01*
-  ROAD UPGRADE -*PHASE 02*
-  EXISTING BUS STOP
-  BUS STOPS AND TAXI DROP OFF ONLY

NEW BRIDGE



**PRECINCT FEATURES**

-  EASY ACCESS TO AND FROM THE N1 AND R21 FREEWAYS
-  HIGHLY VISIBLE FROM NATIONAL ROADS
-  CENTRALLY LOCATED ON PROVINCIAL ARTERIAL ROADS
-  NEW INTERNAL ROAD INFRASTRUCTURE AND EXTENSIVE UPGRADES AROUND THE PRECINCT
-  SECURE PERIMETER
-  24 HR SECURITY PATROLS
-  5 HECTARES OF PARKS AND OPEN SPACE
-  DEDICATED CYCLE TRACKS AND WALKWAYS
-  HIGH SPEED DATA FIBRE INFRASTRUCTURE



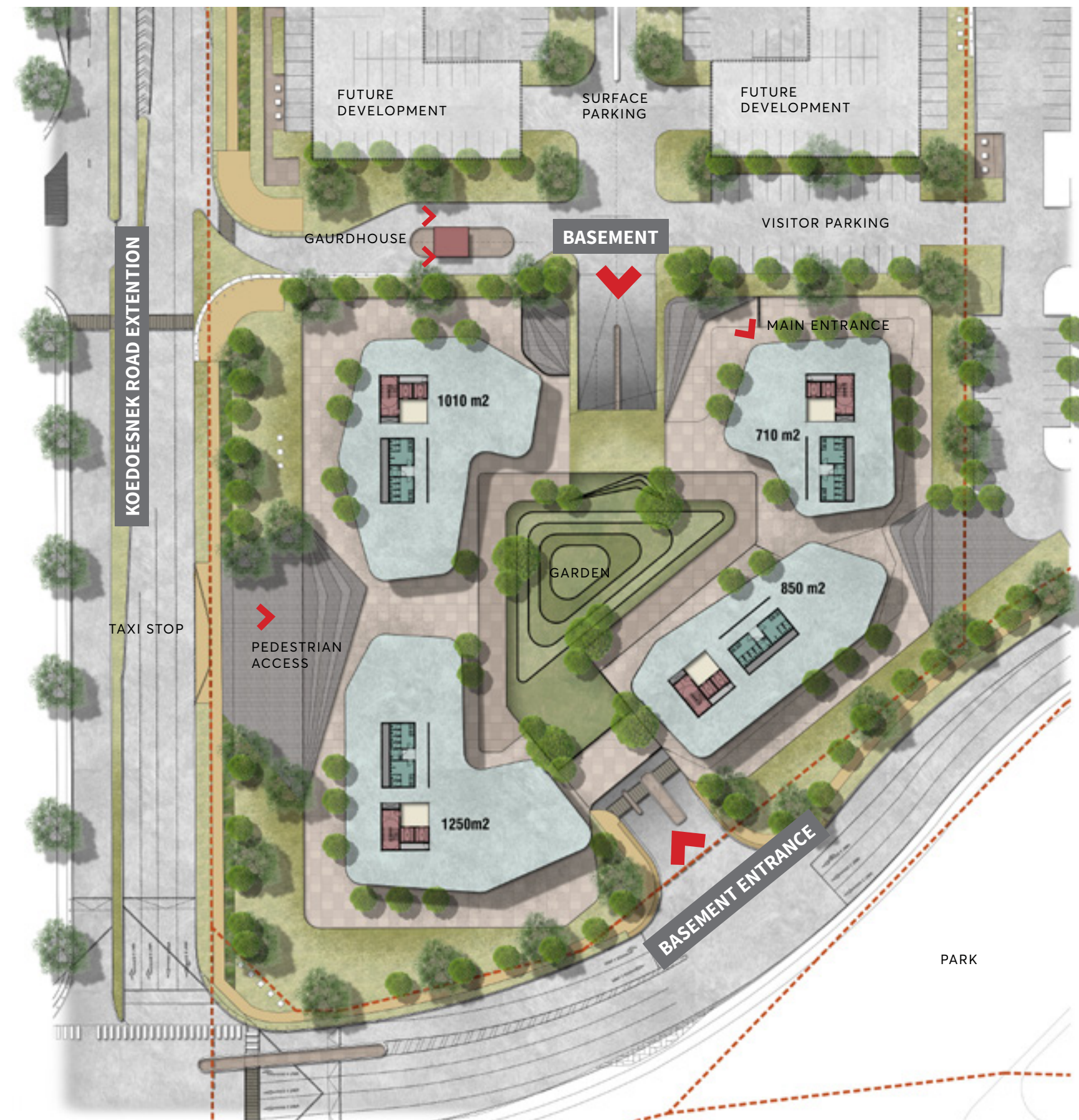
**CASTLE GATE LIFESTYLE - OFFICE BUILDING**  
4 000 m<sup>2</sup>



**CURRENT DESIGN**



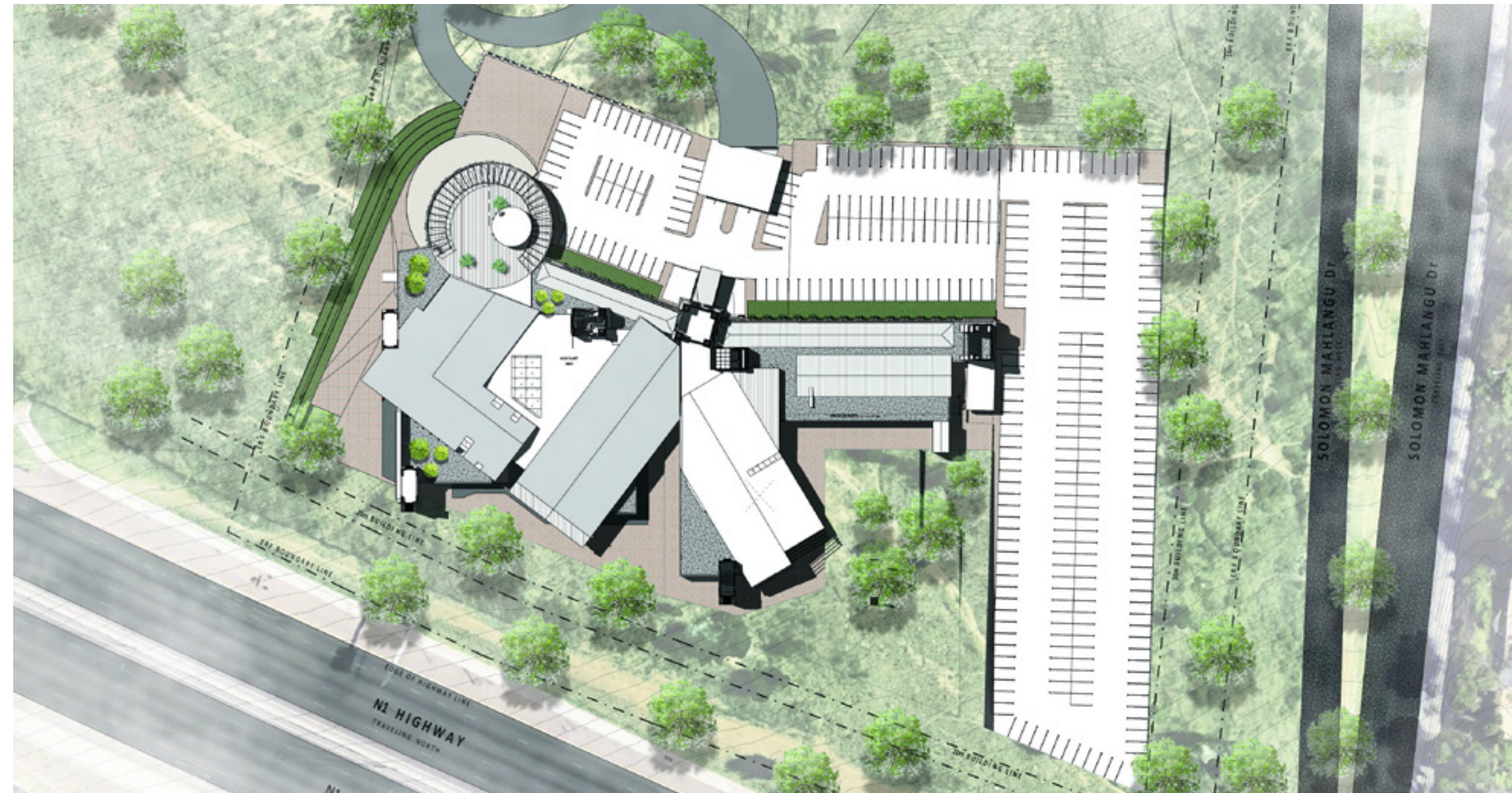
**CASTLE GATE CRESCENT - BUILDING 1**  
26 000 m<sup>2</sup>



**CONCEPT BUILDING**



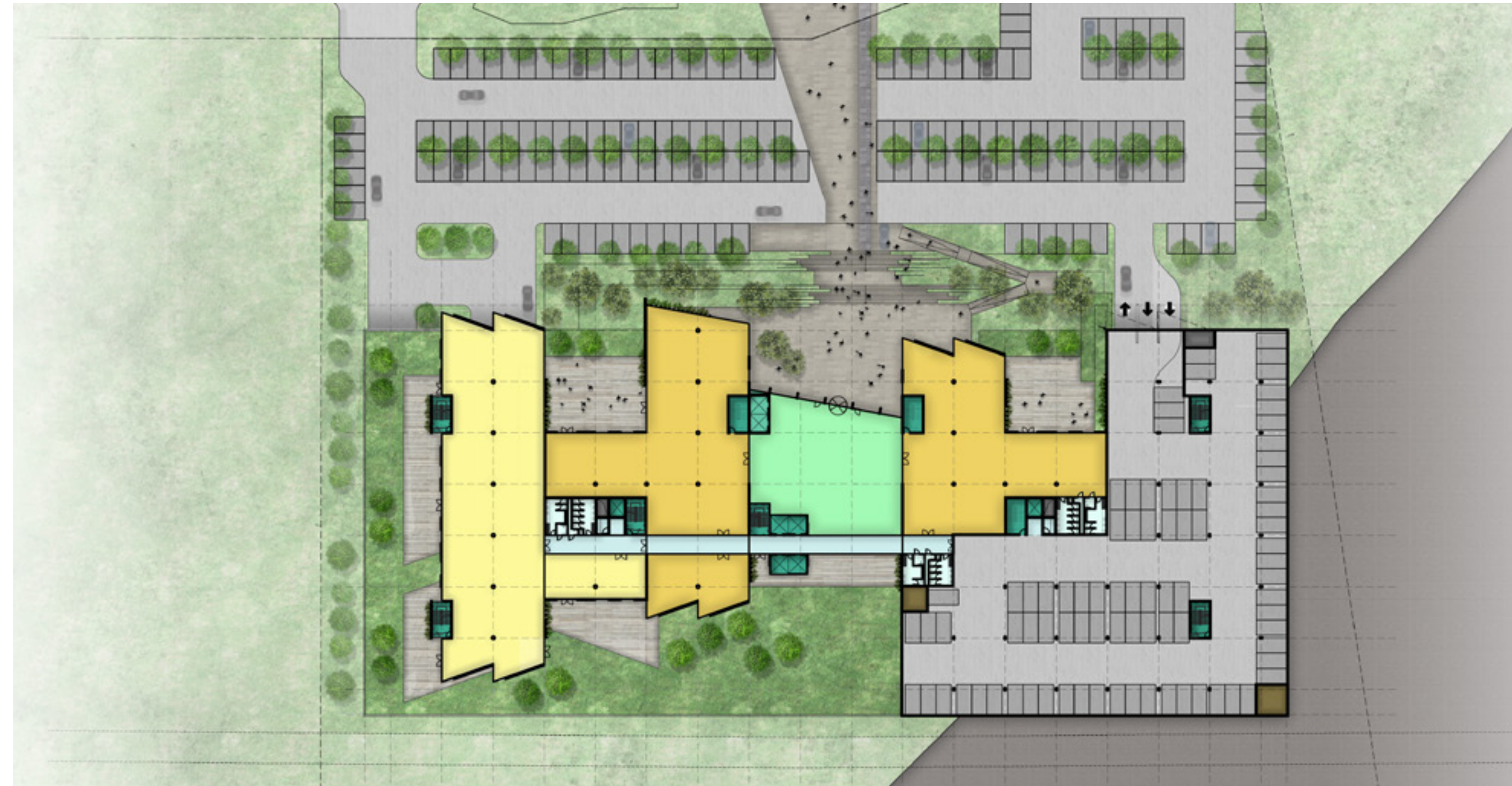
CASTLE GATE CRESCENT - KING PRICE BUILDING  
20 000 m<sup>2</sup>



PERSPECTIVE VIEWS



CASTLE GATE CRESCENT - BUILDING 5  
13 000 m<sup>2</sup>



CONCEPT BUILDING



CASTLE GATE CRESCENT - BUILDING 6  
14 000 m<sup>2</sup>



CONCEPT BUILDING



ATTERBURY

*It's a matter of association*

CONTACT DETAIL:

SOLET VIVIERS

082 564 3042

SOLET@ATTERBURY.CO.ZA

RAOUL DE VILLIERS

082 875 1486

RAOUL@ATTERBURY.CO.ZA