

RANDPORT
« INDUSTRIAL »





ATTERBURY

It's a matter of association

RANDPORT
« INDUSTRIAL »





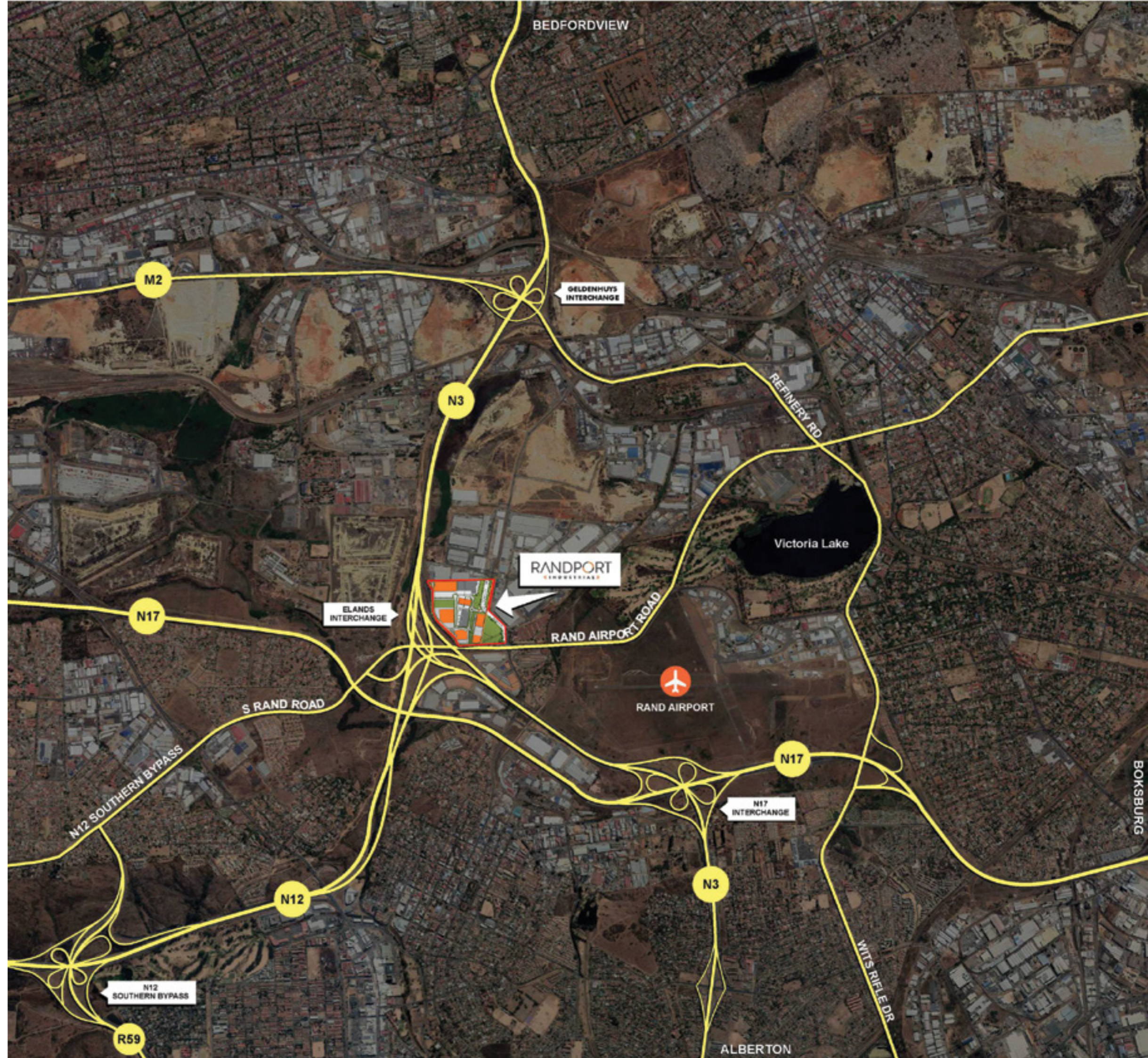
TABLE OF CONTENTS

Page 4 - 7	-	Localities
Page 8 - 11	-	Master plan
Page 12 - 16	-	Perspectives Views

LOCALITIES



MACRO LOCALITY



MACRO LOCALITY



- Airport
- Railway Routes
- Bus Terminals
- Highways
- Primary Road

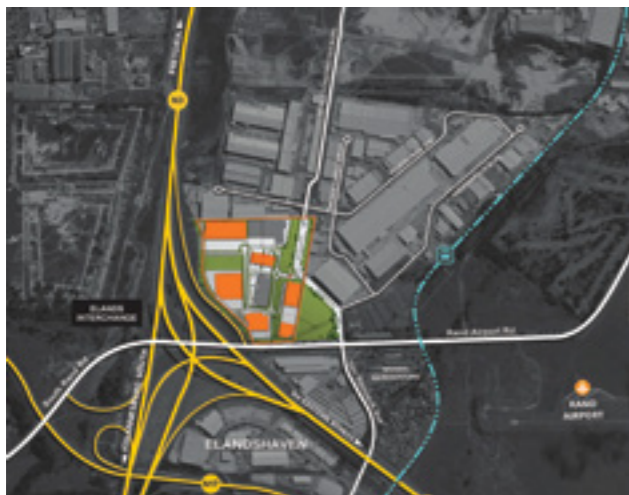
MICRO LOCALITY



MASTER
PLAN

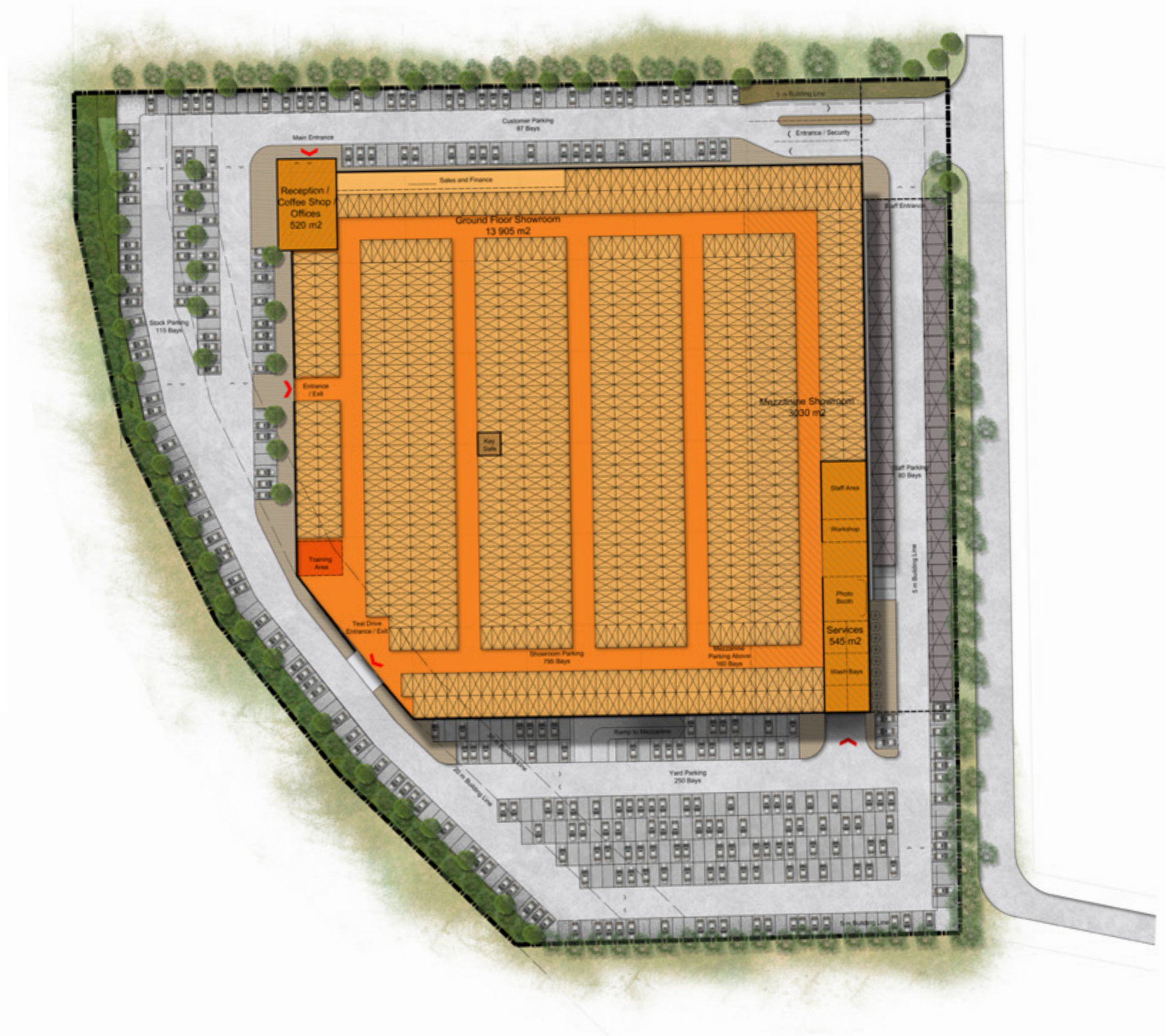


- Available
- Completed



DEVELOPMENT DATA

Erf Size	3.0549 Ha
Total GLA:	18 000m ²
Ground Floor	14 710m ²
Showroom	13 905m ²
Services	545m ²
Reception / Coffee Shop	260m ²
First Floor	3 290m ²
Offices	260m ²
Mezzainin	3 030m ²
Total Parking	1 492 Bays
Customer Parking	87 Bays
Yard Parking	250 Bays
Staff Parking	50 Bays
Stock Parking	115 Bays
Showroom	800 Bays
Mezzanine	160 Bays





PERSPECTIVES
VIEWS











RANDPORT
« INDUSTRIAL »

