

South African Economy's Iconic monument



Cnr Watt and Third Avenue, Alexandra, Gauteng
[ATTERBURY.CO.ZA/PORTFOLIO-ITEMS/PAN-AFRICA-SHOPPING-CENTRE/](https://www.atterbury.co.za/portfolio-items/pan-africa-shopping-centre/)

PanAfrica 

JOHANNESBURG GAUTENG




ATTERBURY
It's a matter of association

- ▶ ABOUT ATTERBURY..... 1
- ▶ LOCALITY & ACCESS..... 2
- ▶ MICRO LOCALITY..... 3
- ▶ INTRODUCTION PAN AFRICA SHOPPING CENTRE..... 4
- ▶ ARCHITECTURAL PLANS
 - ▶ SITE PLAN 5

A dark blue rectangular graphic with a faint, stylized sunburst logo at the top center. The text "TABLE OF CONTENTS" is centered in white, bold, uppercase letters.

TABLE OF CONTENTS





MASTER PLAN:
DEVELOPING DREAMS

1994 saw the beginning of a new era for South Africa. It was the birth of our country as a new, true democracy and the whole world was waiting in anticipation to see to what levels the Rainbow Nation would rise.

1994 also marked the birth of Atterbury and the founders, Francois van Niekerk and Louis van der Watt, realised that there were no limits to their dreams of becoming an international force to be reckoned with. For over 27 years Atterbury has developed and managed prime commercial, industrial, retail and residential property across South Africa, the rest of the African continent and Europe.

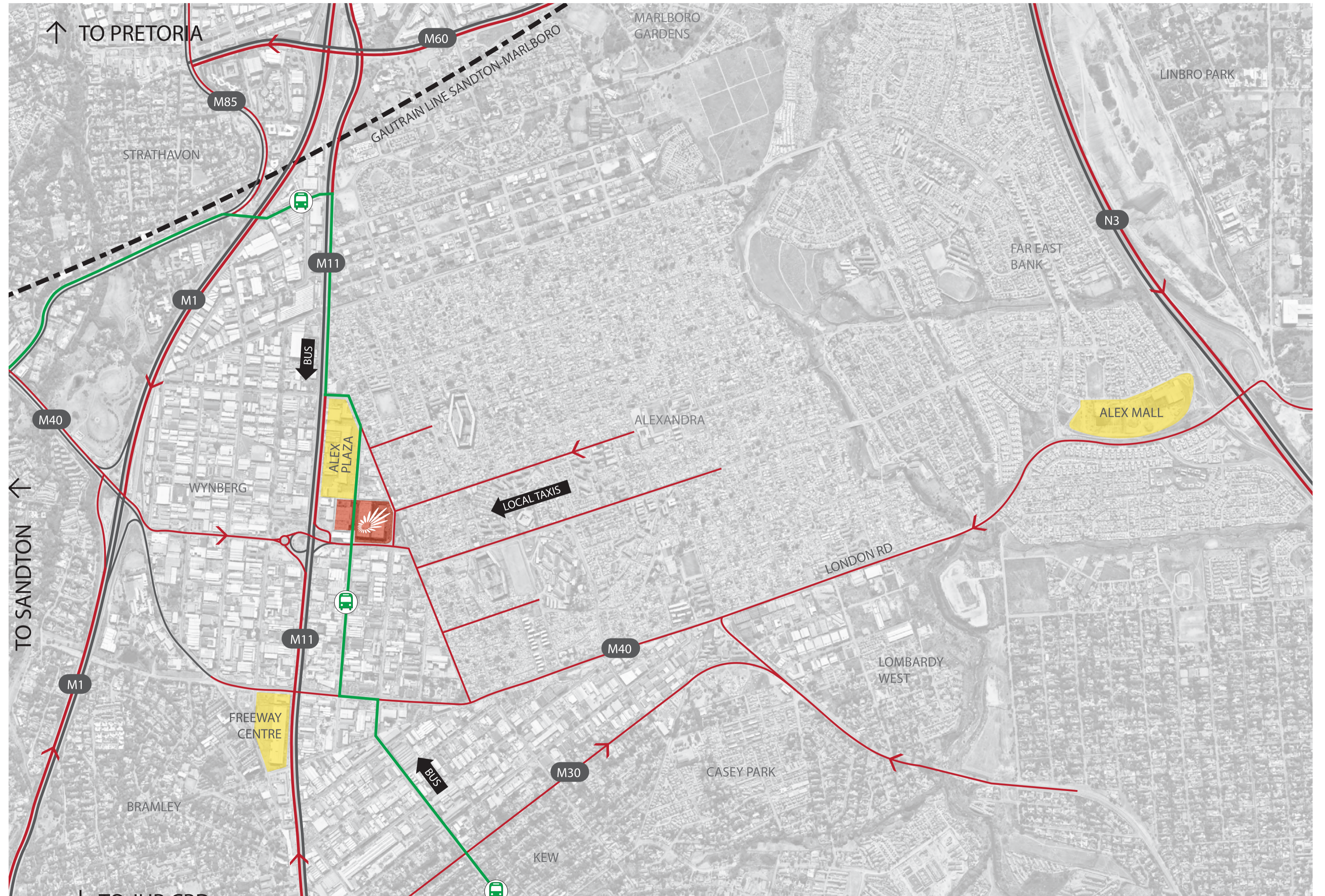
Within the Atterbury Group you are sure to find expertise in development, asset management, leasing and corporate services. At Atterbury, we've always believed that development is the key to unlock economic and societal growth and improvement. Creative, well-managed spaces, featuring appealing aesthetics and elegant architecture within safe and accessible environments are hallmarks of all Atterbury developments.

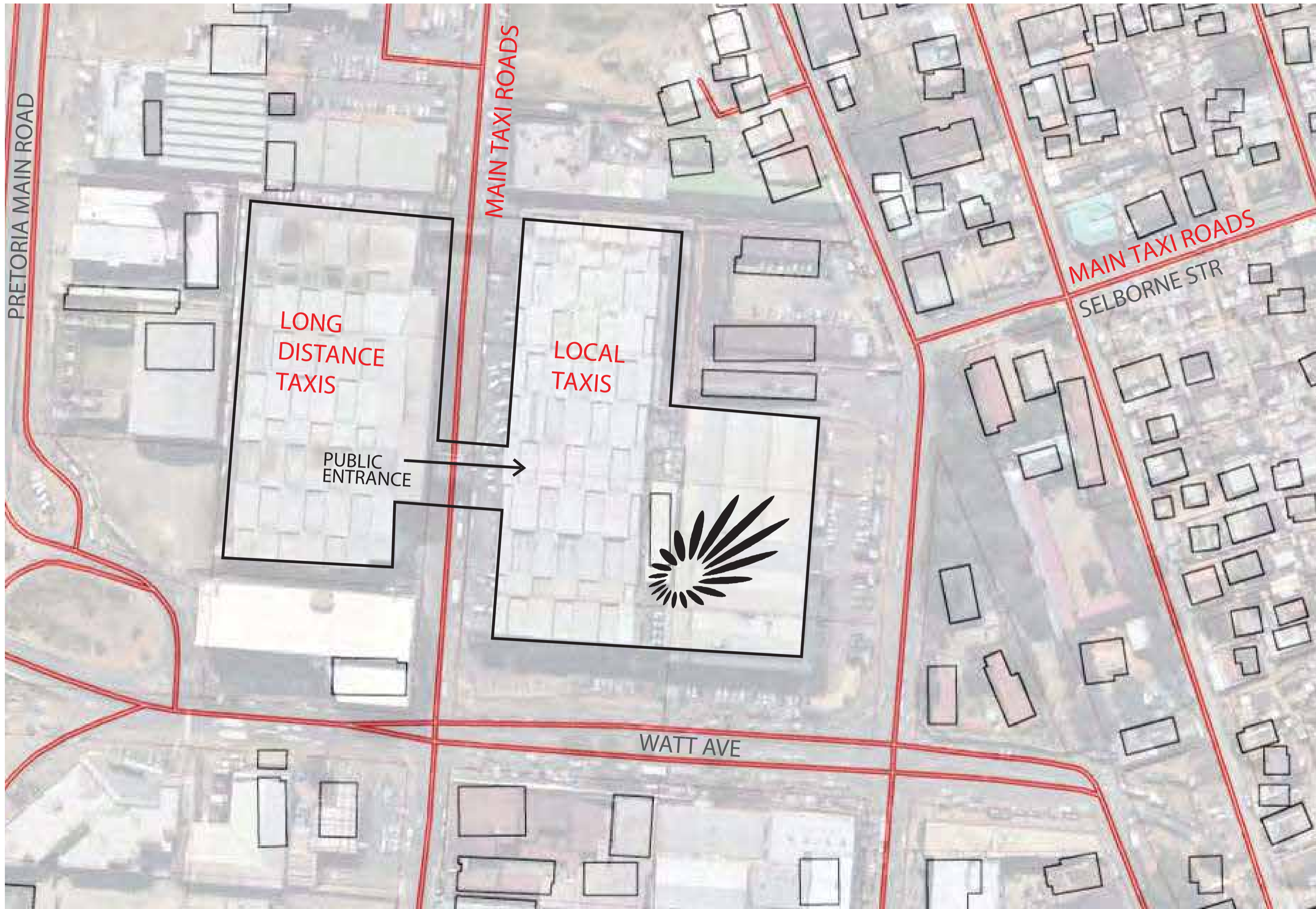
Atterbury is renowned as a leading industrial developer evident by winning consecutive SAPOA awards for best industrial development in South Africa from 2015 to 2017 for Westcon, Hilti and Amrod at Waterfall City in Gauteng.



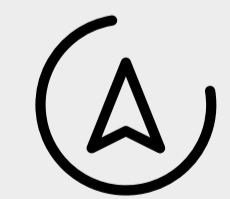


LOCALITY & ACCESS



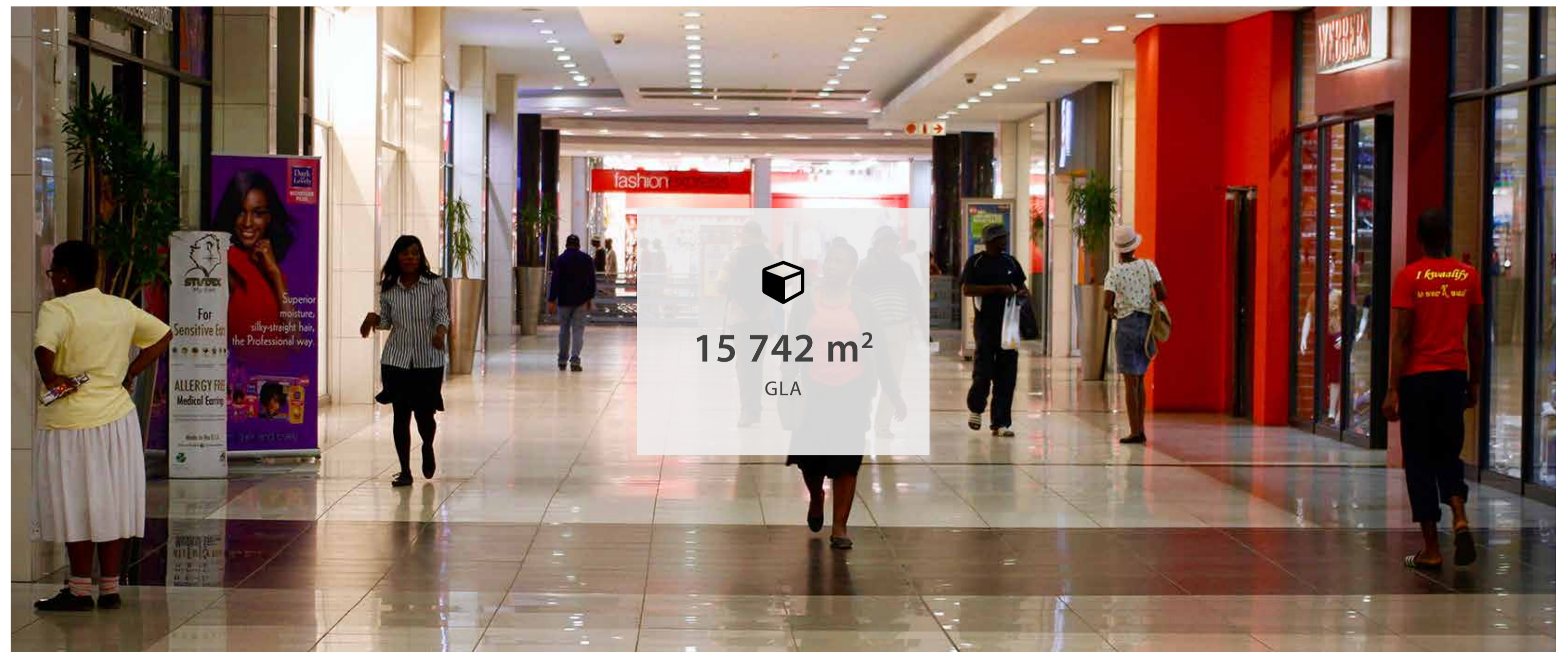


MICRO
LOCALITY



The Pan Africa Shopping Centre is situated on the corners of 3rd Ave and Watt St, Alexandra. With close proximity to Sandton and the industrial area of Wynberg, Pan Africa Mall forms part of the heart in bustling Alexandra's vibrant community.

The easy to navigate, double level shopping centre provides the community with a range of quality national retailers as well as an exciting variety of fast food outlets, restaurants, speciality fashion and service stores. In a pioneering initiative, the centre was the first of its kind in South Africa built with fully integrated public transport which includes a 50,000sqm taxi facility.

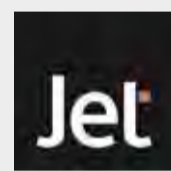




GROUND FLOOR



TRUWORTHS





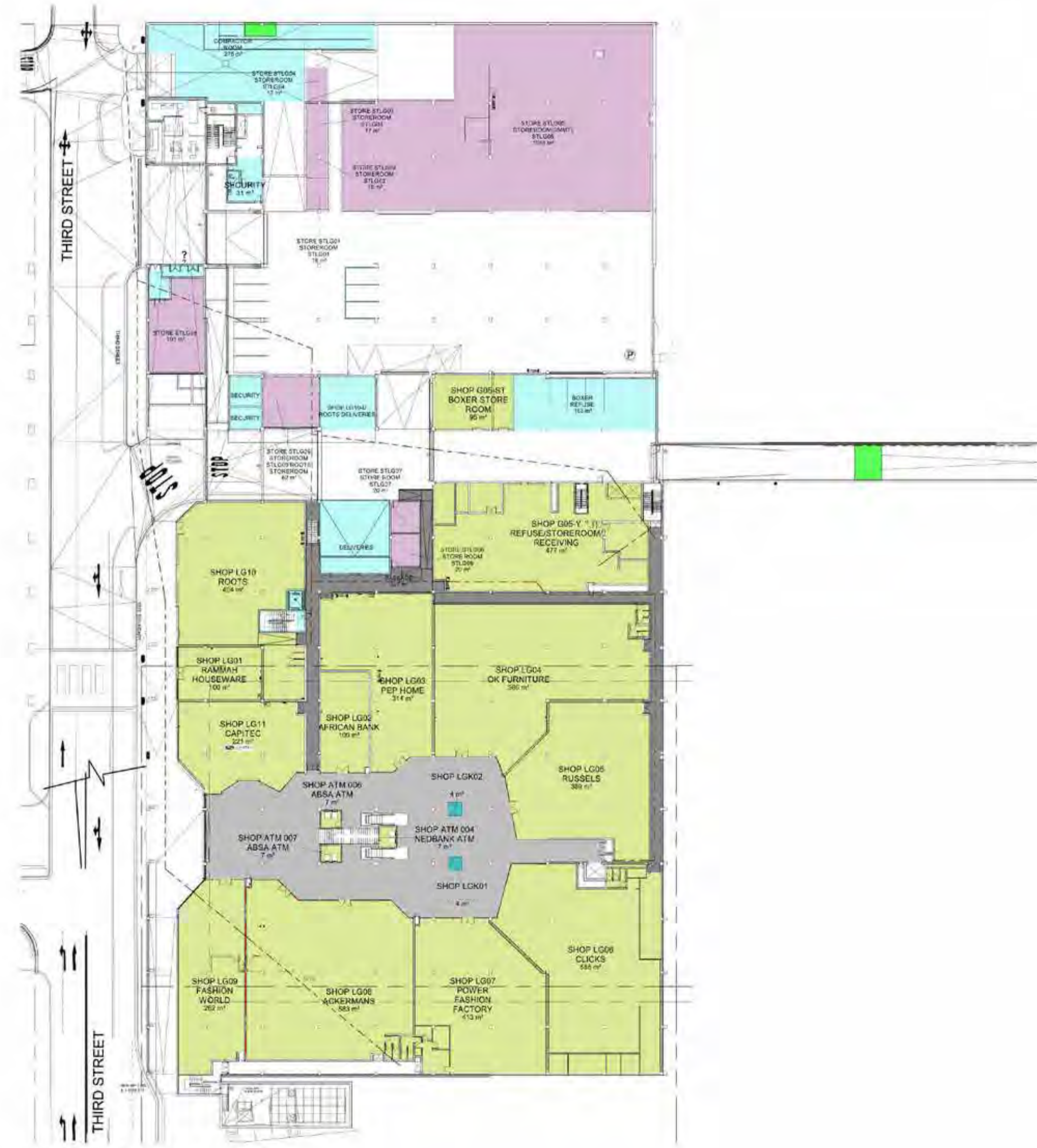
**LOWER
GROUND**

ACKERMANS

CAPITEC

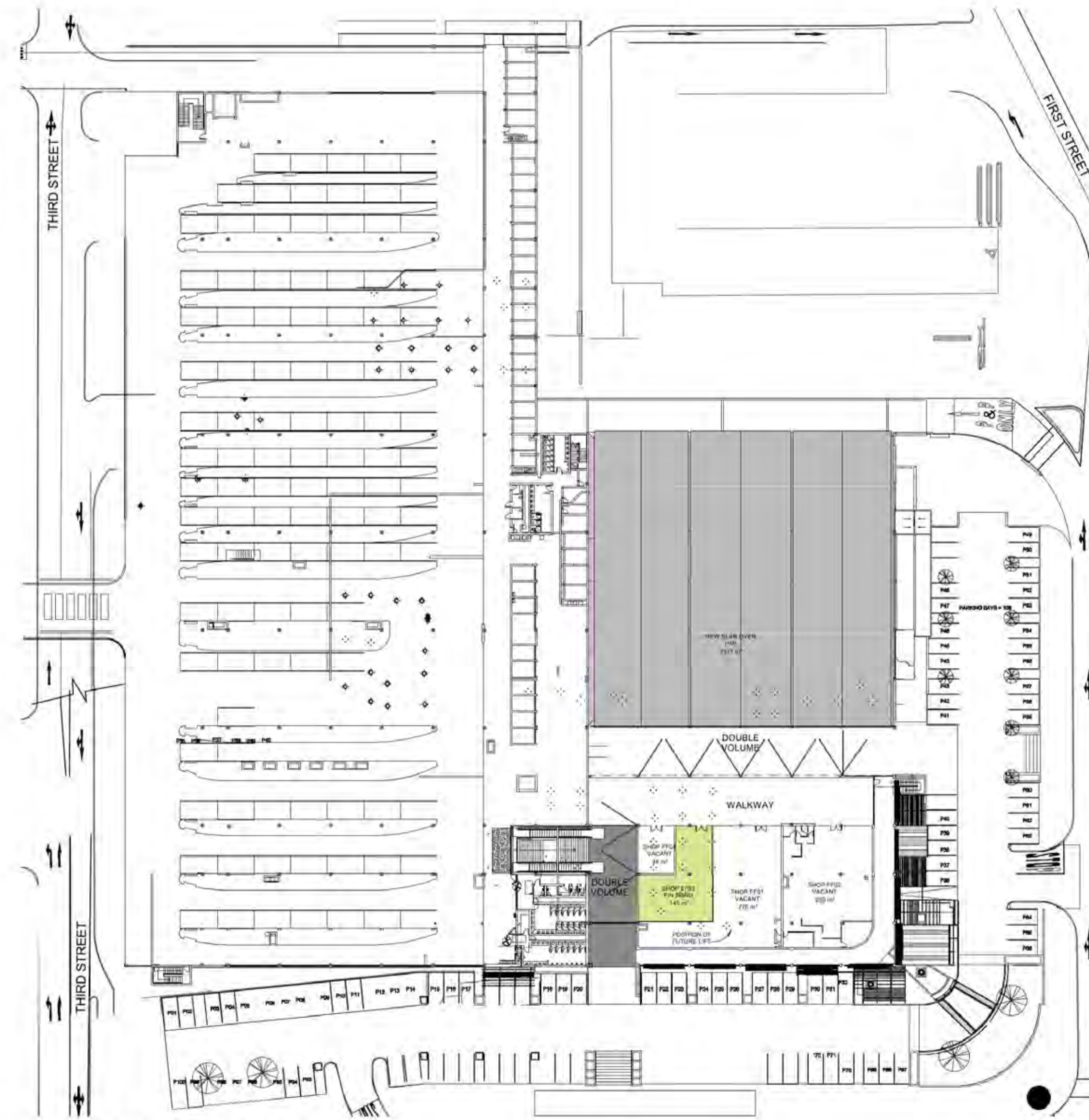
**OK
Furniture**

**Roots
BUTCHERY**





FIRST FLOOR





PRETORIA OFFICE

Die Klubhuis 2nd Floor C/o 18th Street & Pinaster Ave Hazelwood, Pretoria

Tel: +27 12 471 1600, enquiries@atterbury.co.za

Noko Sekgobela, noko@atterbury.co.za, 081 851 4006

atterbury.co.za