

*ipsum enim est in civile
de physica applicationem, pectore
principis et in solvendo pro
humane societatis cum intellectu
Physicis et mathematicis*

$$\frac{1}{2} \left(\frac{1}{E} + \frac{1}{E_0} \right) \\ \frac{1}{2} \left(\frac{1}{E} + \frac{1}{E_0} \right) = \frac{1}{E_0}$$

OldMint

PARK

LOGISTICS
LIGHT INDUSTRIAL
DISTRIBUTION



ABOUT OLD MINT PARK..... 1

MACRO LOCALITY 2

MICRO LOCALITY 3

KEY FEATURES..... 4

SITE PLAN 5

PHOTO GALLERY 7





Mint St, Louwlandia, Centurion, 1683

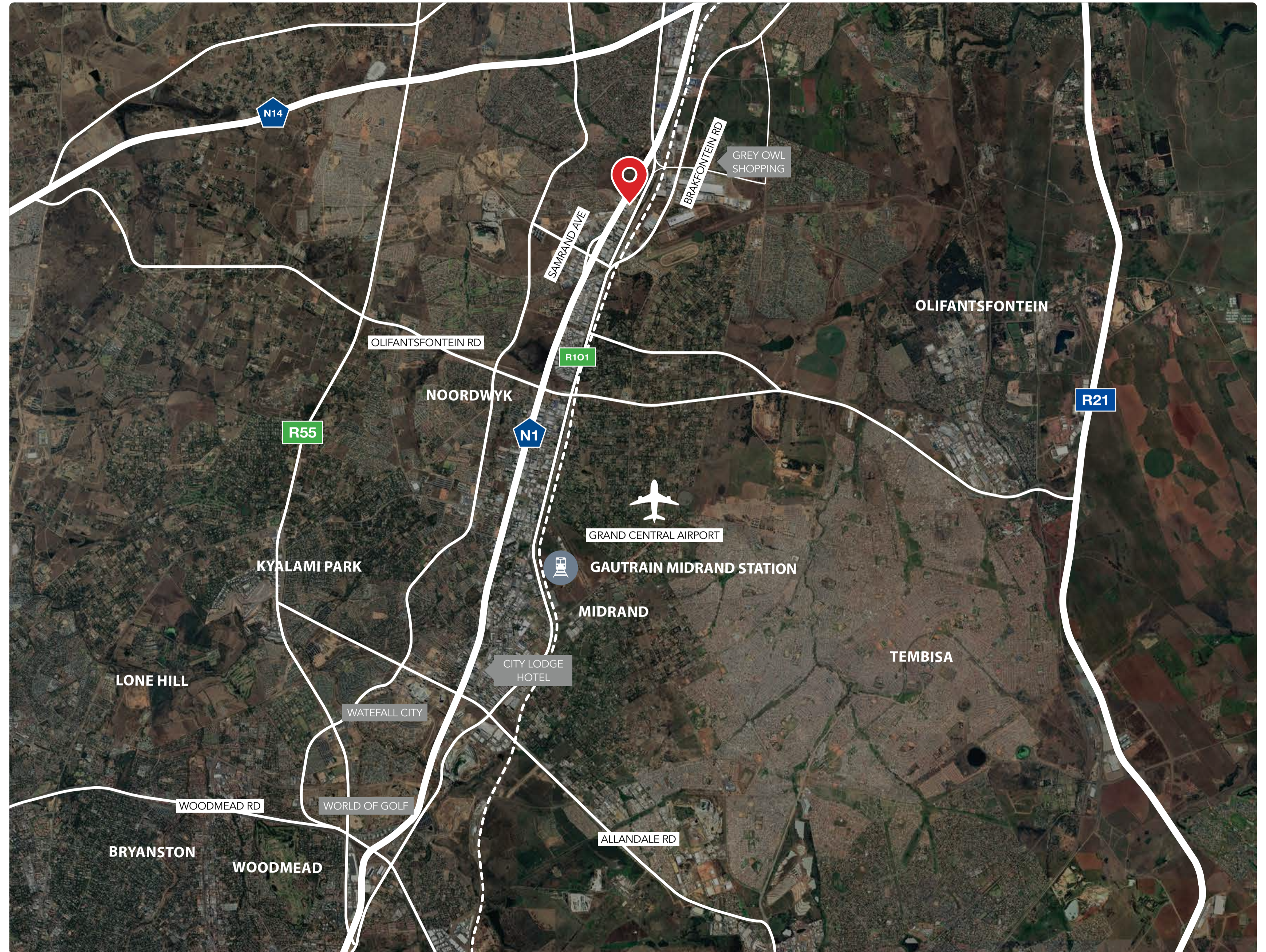
OLD MINT PARK

LOGISTICS | LIGHT INDUSTRIAL | DISTRIBUTION

Enjoying high visibility, this secure light industrial park is conveniently situated between the N1 and Old Johannesburg Road's (K101) where Midrand meets Centurion. Less than 1.5km's from the Old Pretoria Road and Brakfontein Road on-ramps and off-ramps and the Samrand Interchange, Old Mint Park boasts easy access to and from major arterials.

MACRO LOCALITY

Old Mint Park is conveniently situated between the Brakfontein interchange (Old Jhb/Pta road) and Samrand off-ramps, on the border between Midrand and Centurion. Old Mint Park is closely bordered by several nodes. Waterfall City to the South and Midstream and Irene to the North.





KEY FEATURES

The total site area of Old Mint Park is ± 12.53 ha. The development of this land parcel allows for the provision of some 75 217 m² of Distribution, Manufacturing, Warehousing, Showroom and Offices upon completion.



Secure Environment with **24-hour guarded** access control.



Installed **fibre Optic infrastructure** which integrates with tenant's ISP of choice.



Established public transport system including bus and taxi routes. Old Mint Park is also located directly opposite the future Samrand Gautrain station.



Enjoying **high visibility**, this secure light industrial park is conveniently situated between the N1 and Old Johannesburg Road with **quick access** to and from the N1 highway.



Connection to **centralised pump and tanks**.



1 Development site available which can be built to suit tenant's specific requirements.





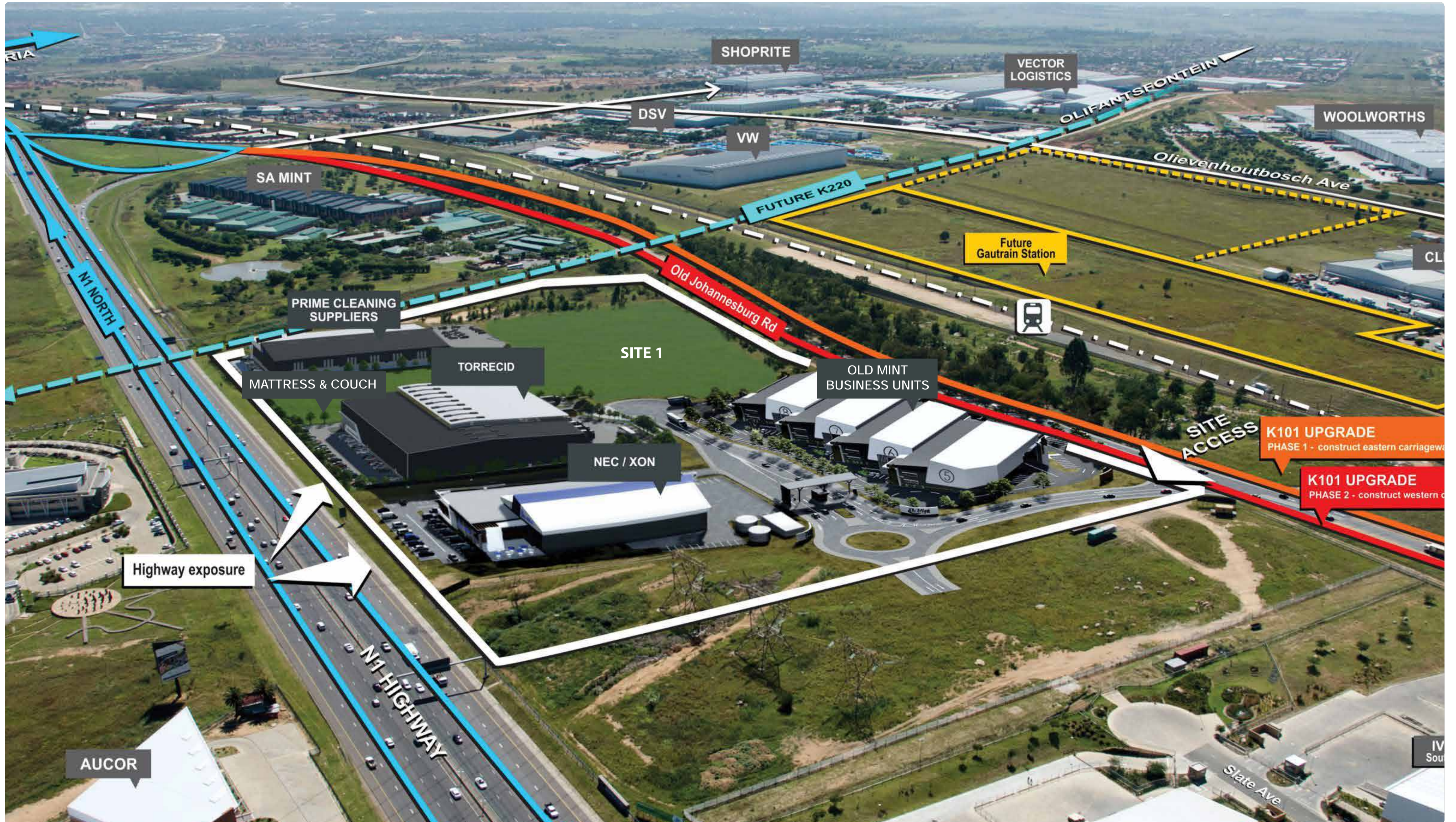
SITE MAP



OLIEVENHOUTBOSCH
KOSMOSDAL EXTENTION 7

AVAILABLE LAND FOR DEVELOPMENT

SITE 131 800 m²

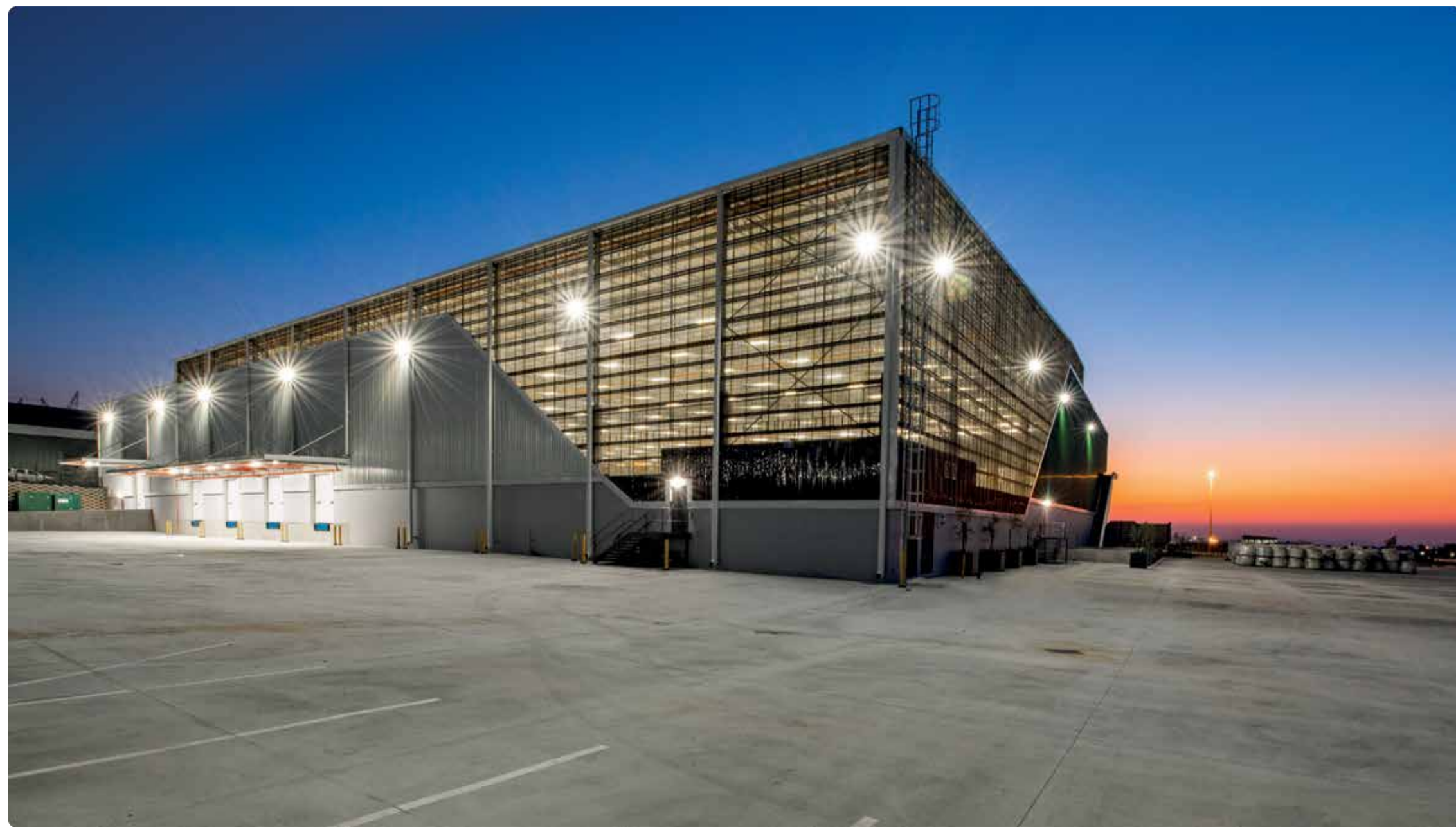
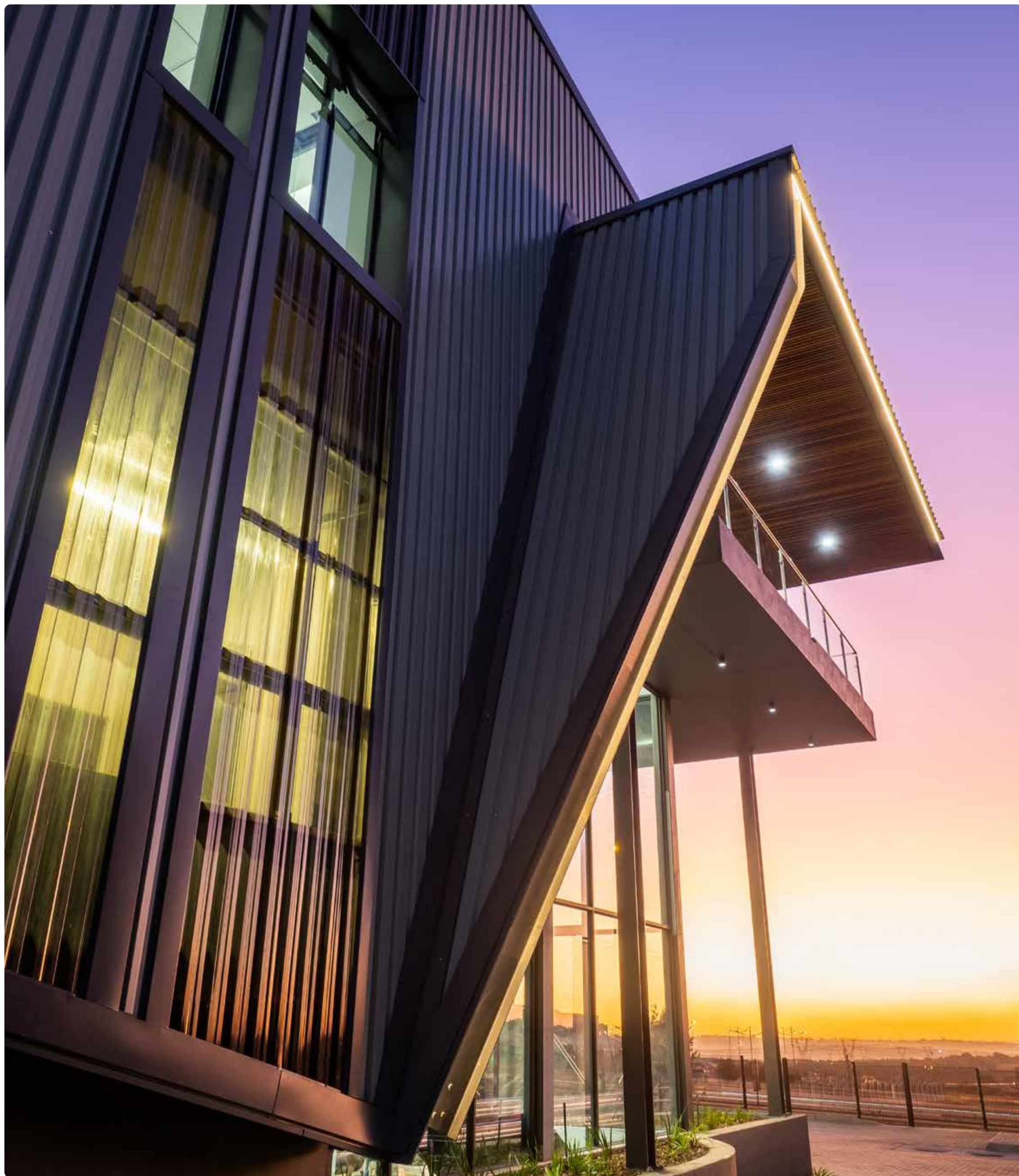




A dark blue rectangular area containing a white photo icon at the top center. Below the icon, the text "PHOTO GALLERY" is written in white, with "OldMint" in a lighter blue font behind it. Underneath, "January 2022" is written in white.









PRETORIA OFFICE

Die Klubhuis 2nd Floor C/O 18th Street & Pinaster Ave Hazelwood, Pretoria

Tel: +27 12 471 1600

Derrick Pautz, 082 820 8704 | derrick@atterbury.co.za

atterbury.co.za

