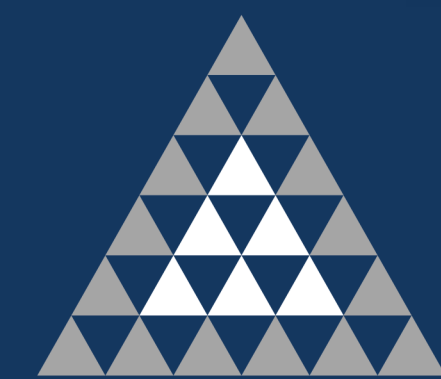




club one

PRETORIA GAUTENG

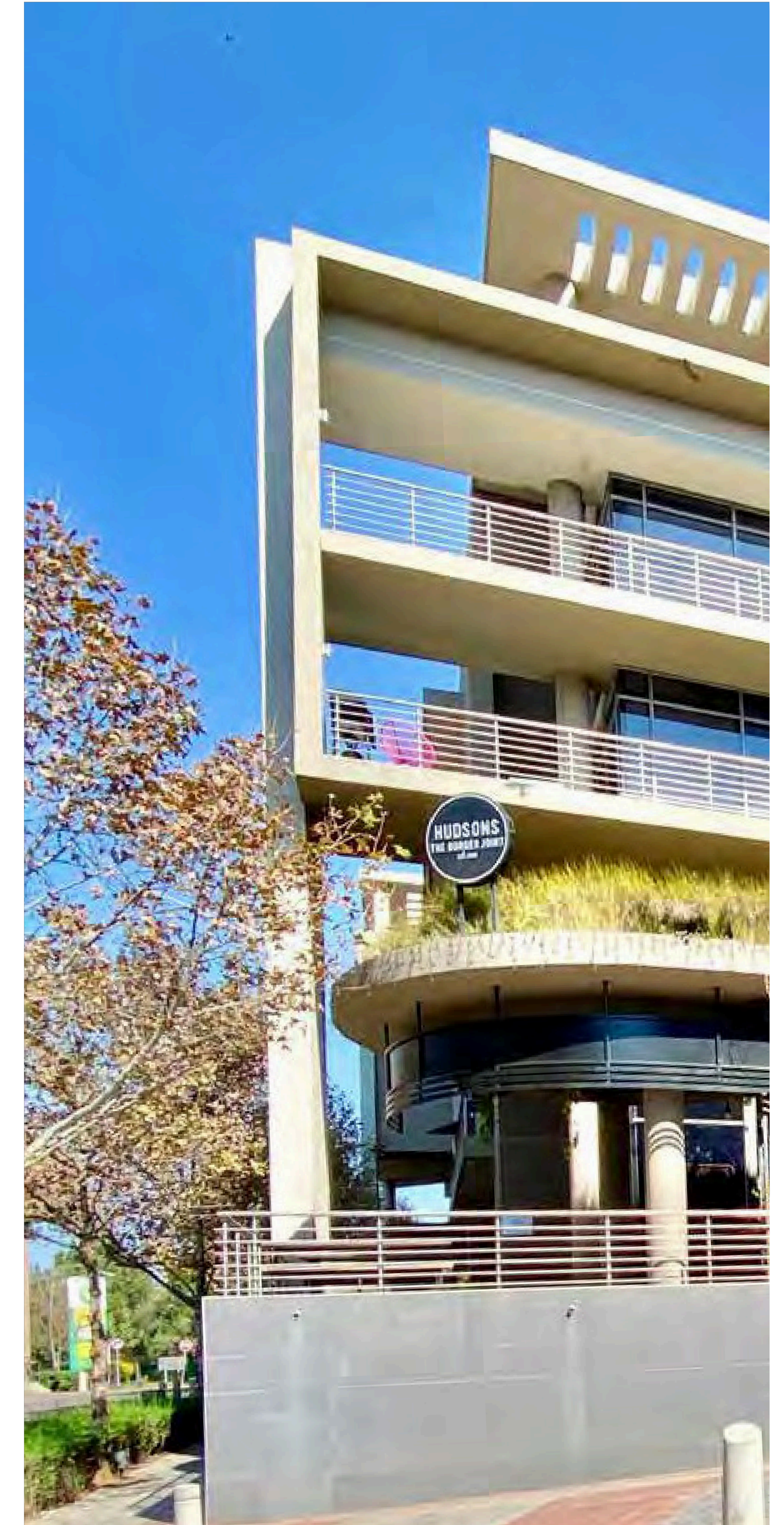


ATTERBURY

It's a matter of association

club one

- ▲ ABOUT ATTERBURY..... 1
- ▲ MACRO LOCALITY & ACCESS..... 2
- ▲ OLD EAST PRECINCT..... 3
- ▲ INTRODUCTION: CLUB ONE..... 5
- ▲ ARCHITECTURAL PLANS 6
 - ▶ SITE PLAN 6
- ▲ PHOTOGRAPHIC LIBRARY..... 8





MASTER PLAN: DEVELOPING DREAMS

Atterbury specializes in creating meticulously crafted environments tailored to our tenants, clients, partners, and investors.

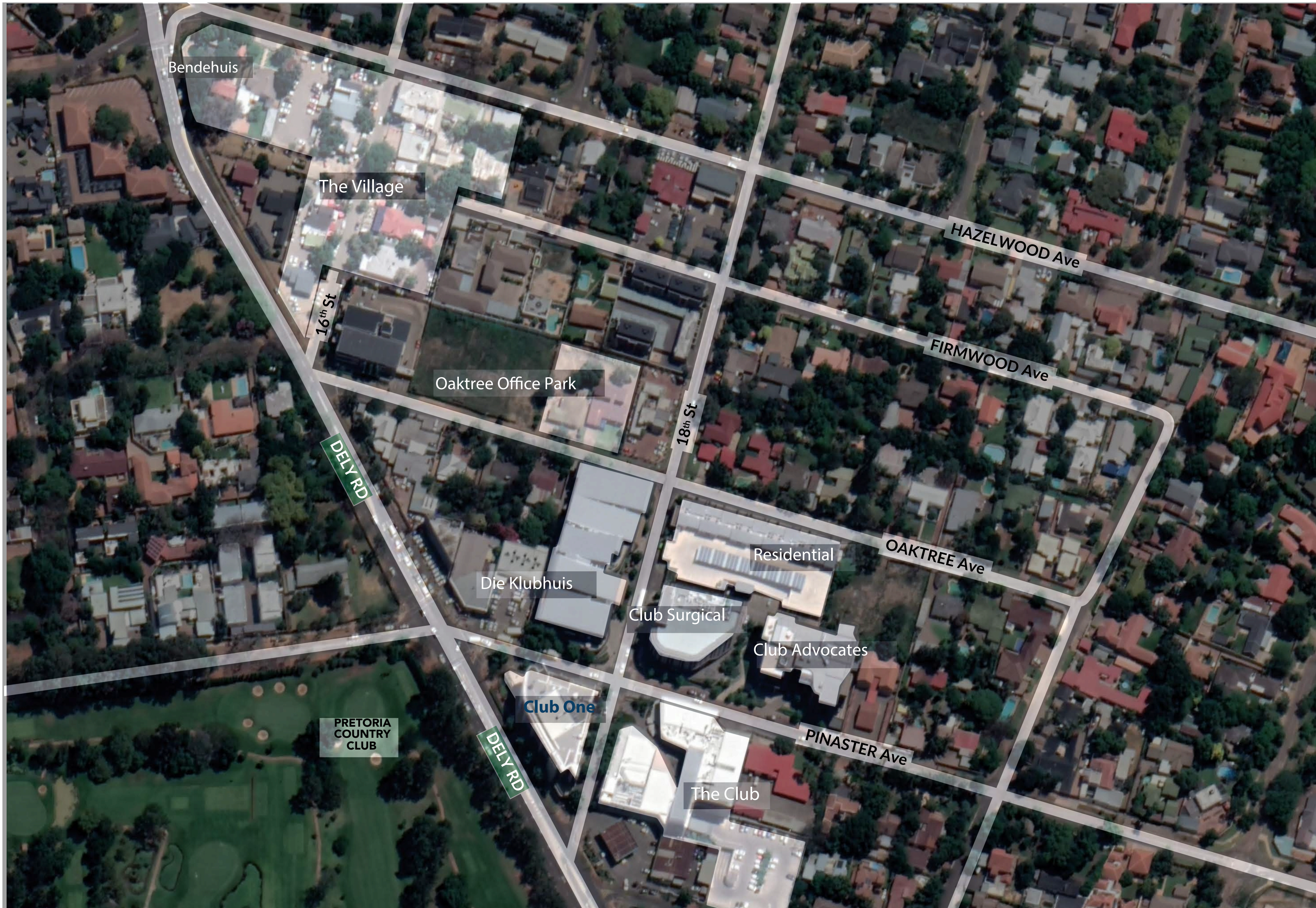
As a dynamic real estate development, investment, and management company, we focus on prime mixed-use, commercial, retail, and industrial properties. Our roots in South Africa have blossomed into a pan-African and European presence.

Atterbury thrives on cultivating enduring relationships and fostering mutually advantageous partnerships. Our progressive and collaborative corporate culture drives us forward.

Sustainability is at the core of our ethos, permeating every aspect of our work. With an adept team, we manage pivotal connections with leading retailers, corporations, businesses, and brokers. By aligning with exceptional employees, partners, and suppliers, we ensure collective prosperity.

At Atterbury, we believe in a holistic vision that transcends individual components, creating a whole greater than the sum of its parts.





MACRO
LOCALITY

The Village

The Village on 16th Street is Pretoria's vibrant hub, offering open-air dining, boutique retailers, and diverse eateries, creating an inviting atmosphere for every visitor.

Village Walk

Village Walk links The Village and The Club, blending open-air dining, boutique retail, public art, and vibrant urban life into Pretoria East's most engaging community hub.



Club Advocates

The building comprises of advocate chambers, housing ±160 advocates, with a mega basement spanning 2 levels.

Club Surgical

The state of the art facility comprises of a medical Centre with a Dischem on the ground floor, a day hospital and expert medical professionals.

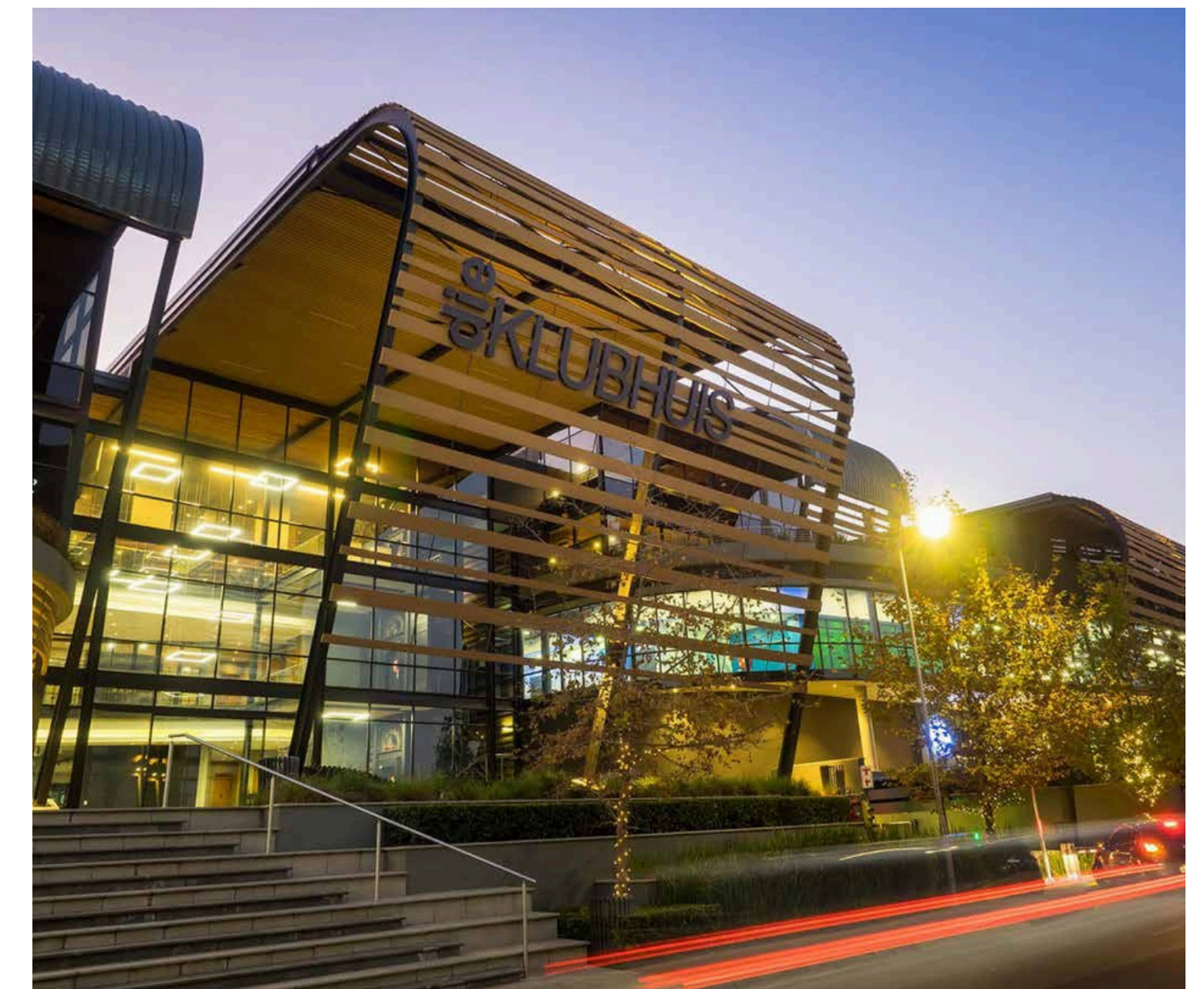


The Club

The Club, opposite Pretoria Country Club in Hazelwood, offers exclusive dining, upmarket convenience, and easy N1 access via the Garsfontein off-ramp.

Die Klubhuis

Atterbury's headquarters, featuring retro-industrial design and dramatic canopies, offers modern, efficient office space with unique gathering areas, a gym track, and striking architectural presence.





club one

Located across the road from Pretoria Country Club - where The Club draws inspiration for its name - this development is positioned in one of Pretoria's prime areas with good proximity to the exclusive suburbs of Waterkloof and Brooklyn.

This prestigious and trendy Pretoria landmark development comprises approximately 5 250m² of office and retail space.

Club One was designed and completed in 2011. A prestigious office and retail building comprising of 4 office floors with restaurants on the ground floor.



5 250 m²
GLA



October 2011
COMPLETED

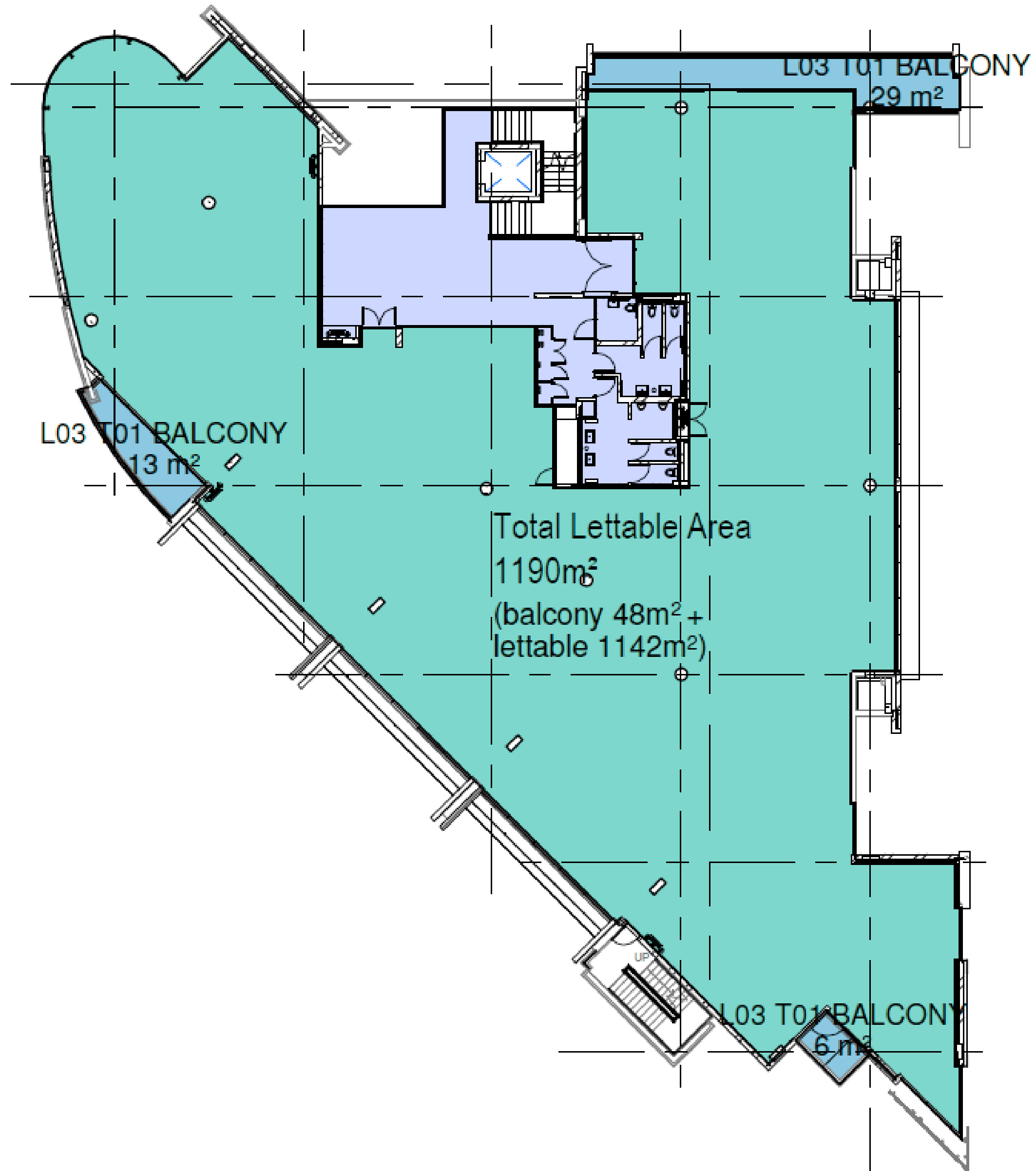


120
PARKING BAYS



club one

**THIRD
FLOOR**

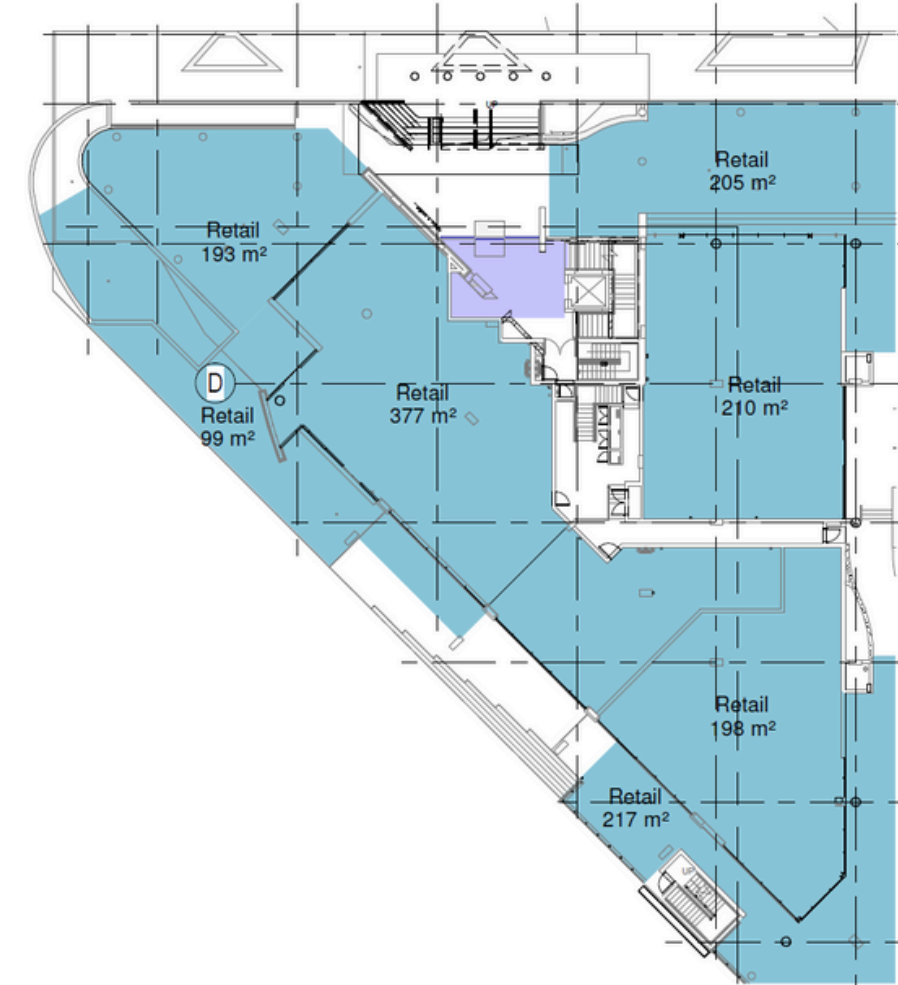


club one

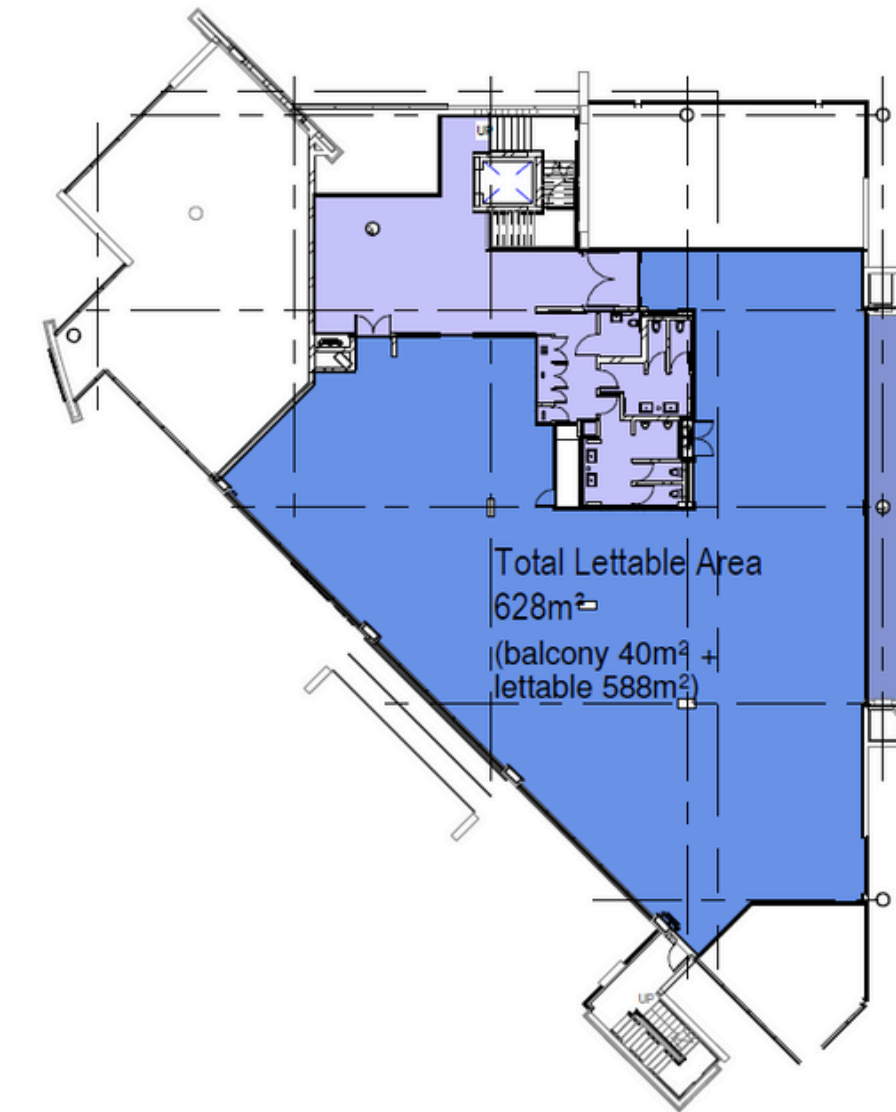
“LET” GROUND,
FIRST, SECOND &
FOURTH
FLOOR



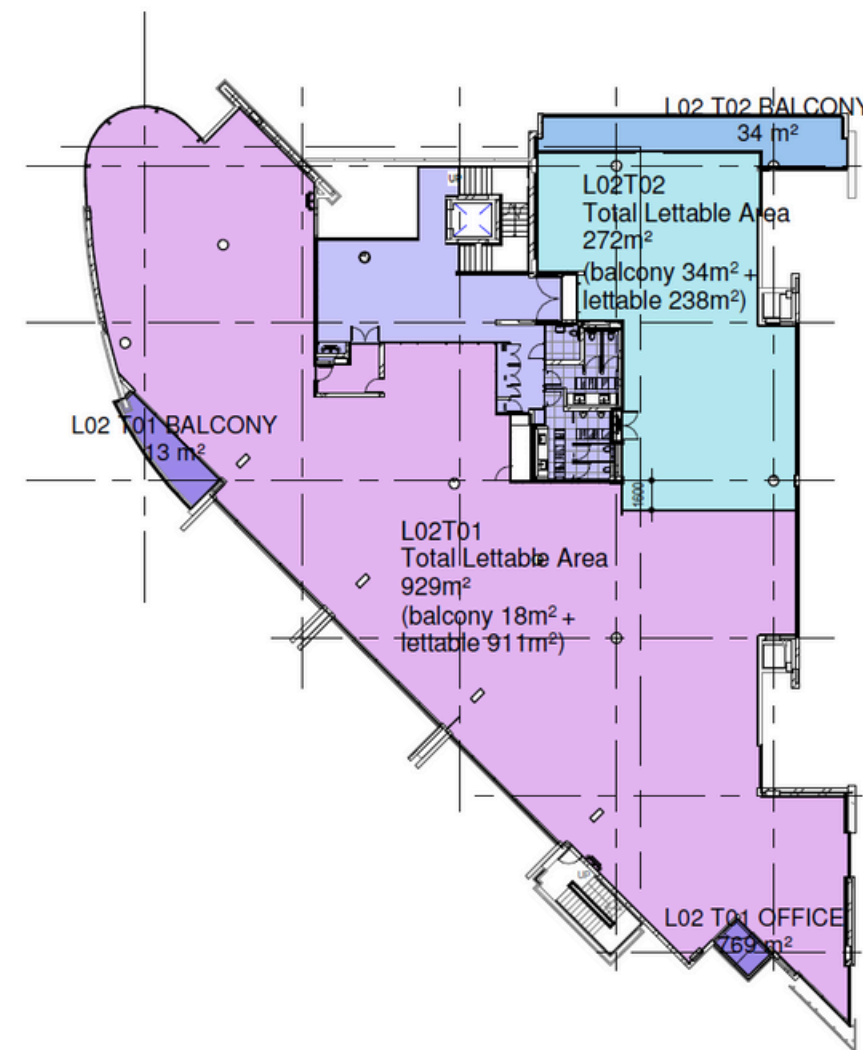
Dr Jackie Thompson



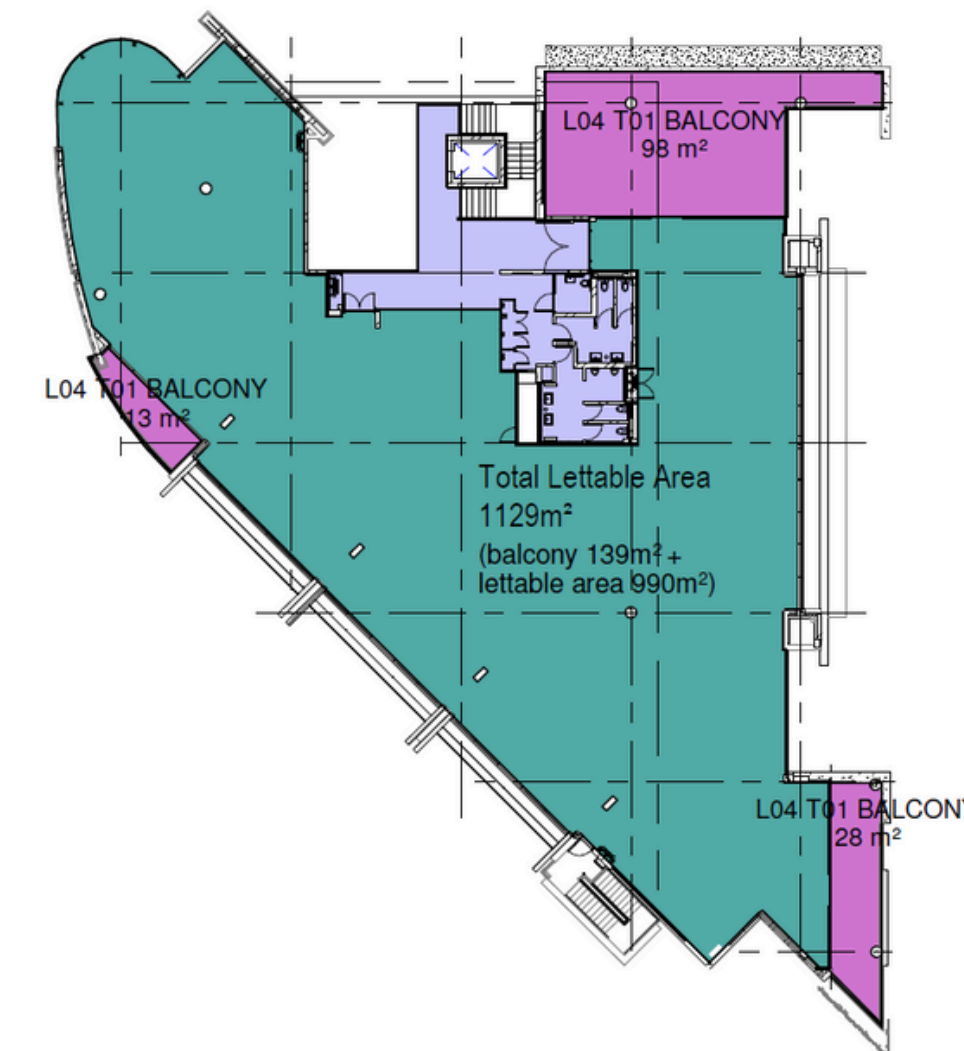
GROUND FLOOR



FIRST FLOOR



SECOND FLOOR



FOURTH FLOOR





PRETORIA OFFICE

Die Klubhuis 2nd Floor C/o 18th Street & Pinaster Ave Hazelwood, Pretoria

Contact Zandri Wells, tel: +27 82 772 8131, zandri@atterbury.co.za

Tel: +27 12 471 1600, enquiries@atterbury.co.za

atterbury.co.za