

1 Suzuka Road, Gosforth Park, Germiston

# RANDPORT

## «INDUSTRIAL»

Elevate your business at Randport Industrial with tailor-made solutions for growth and visibility.

Discover the ultimate location for your distribution, warehousing, showroom, or offices at Randport Industrial.

Centrally positioned in Gauteng within an established industrial hub that's already home to leading blue-chip corporates and major national firms.



**Secure Environment** with 24-hour guarded access control.



**Installed Fibre Optic infrastructure** which integrates with tenant's ISP of choice.



**Centrally located** in an established industrial node which is occupied by blue-chip corporates and major national companies.



**Easy access to and from major arterials** via Rand Airport Road through the N3 / N12 and N17 freeways.



**Connection** to centralised pump and tanks.



Randport borders the N3 highway and Rand Airport Road, providing tenants with **excellent highway exposure and visibility**.



### Sites for Development INDICATIVE SITE AREAS

1	BIDVEST
2	BEARING CORPORATION WE BUY CARS
3	

4	AFRILOG
5	BUSINESS UNITS: 17 200 m <sup>2</sup>
6	14 732 m <sup>2</sup>
7	6 043 m <sup>2</sup>

8	22 623 m <sup>2</sup>
9	CHILLEWENI
10	CHILLEWENI
11	WE BUY CARS



Inspired by Atterbury

#### CONTACT DETAILS:

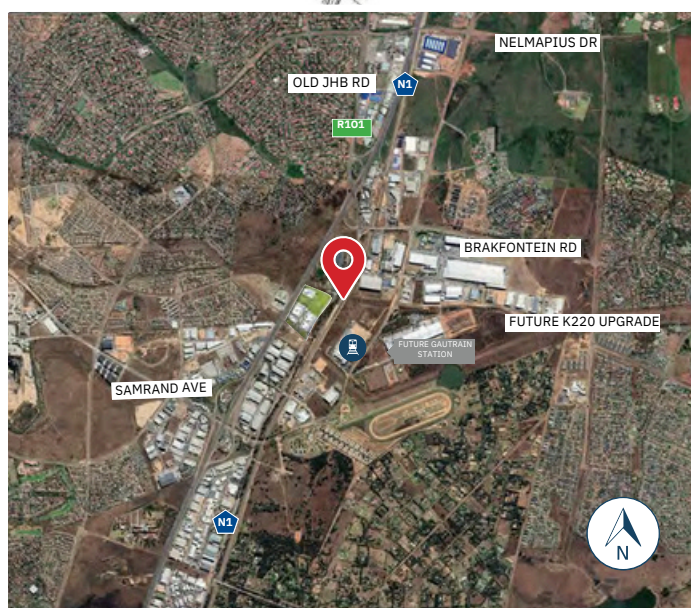
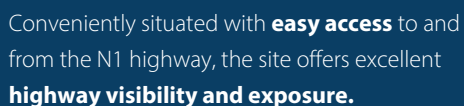
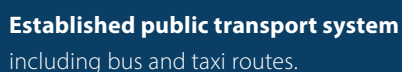
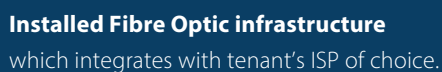
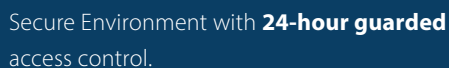
**Kaylene Markley**  
Office: +27(0)12 471 1600  
Mobile: 082 262 3739  
kaylene@atterbury.co.za

[www.atterbury.co.za](http://www.atterbury.co.za)



Mint St, Louwlandia, Centurion, 1683

With 31,800m<sup>2</sup> of land available for development, exceptional freeway exposure, and close proximity to major transportation nodes and national retailers, Old Mint Park offers unparalleled visibility and convenience for your business needs.



**Derrick Pautz**  
Office: +27(0)12 471 1600  
Mobile: 082 820 8704  
[derrick@atterbury.co.za](mailto:derrick@atterbury.co.za)

[www.atterbury.co.za](http://www.atterbury.co.za)