

## NOW LEASING | TOWERS MAIN, JOHANNESBURG CBD

±10,000 m<sup>2</sup> | A-Grade Office Space | 4-Star Green Rated Building  
Available at R105.00/m<sup>2</sup> Gross.

# TOWERS MAIN

JOHANNESBURG GAUTENG



# DIVERCITY

URBAN PROPERTY GROUP

ENQUIRE TODAY

Kevin Kabi · 070 457 2238  
kevin@ithembaproperty.co.za

Danie de Beer · 079 505 0277  
danie@atterbury.co.za

160 Main Street, City and Suburban, Johannesburg

<https://www.divercity.co.za/portfolio/>



# LETTING DETAILS

<b>Availability</b>	Immediately
<b>Premises</b>	1st - 9th Floor
<b>Size</b>	Offices; 10, 231m <sup>2</sup> Supplementary Areas: 571m <sup>2</sup>
<b>Lease period</b>	Flexible Lease Options Available
<b>Gross Rental</b>	R105.00 / m <sup>2</sup> / month
<b>Supplementary Rental Area</b>	R70.00 / m <sup>2</sup> / month
<b>Parking</b>	207 Basement Parking Bays Parking Rental: R800.00 / bay / month

## WHY TOWERS MAIN

- One of Johannesburg’s best-value A-Grade offerings
- Premium building at a breakthrough rental
- Green-star credentials support future-fit tenants
- Perfect for single HQ users, shared office structures or multi-tenant leasing

## BOOK A SITE VISIT

- KEVIN KABI
- PHONE: 070 457 2238
- KEVIN@ITHEMBAPROPERTY.CO.ZA

- DANIE DE BEER
- PHONE: 079 505 0277
- DANIE@ATTERBURY.CO.ZA



## Key Features:

BUILT FOR QUALITY. DESIGNED FOR PERFORMANCE. Towers Main combines modern office efficiency with the energy of a mixed-use precinct, creating a secure, functional and future-ready corporate address.

### Tenant Highlights:

- Large, efficient floor plates with great natural light
- Modern building management, air-conditioning & vertical circulation
- High-speed fibre connectivity
- 24/7 access control, CCTV and security
- 355 secure parking bays with direct lift access
- Ground floor retail, coffee shops and breakout areas
- On-site residents create a lively, safe, 24-hour environment
- Backup systems (power/water) where applicable (customise based on your specs)

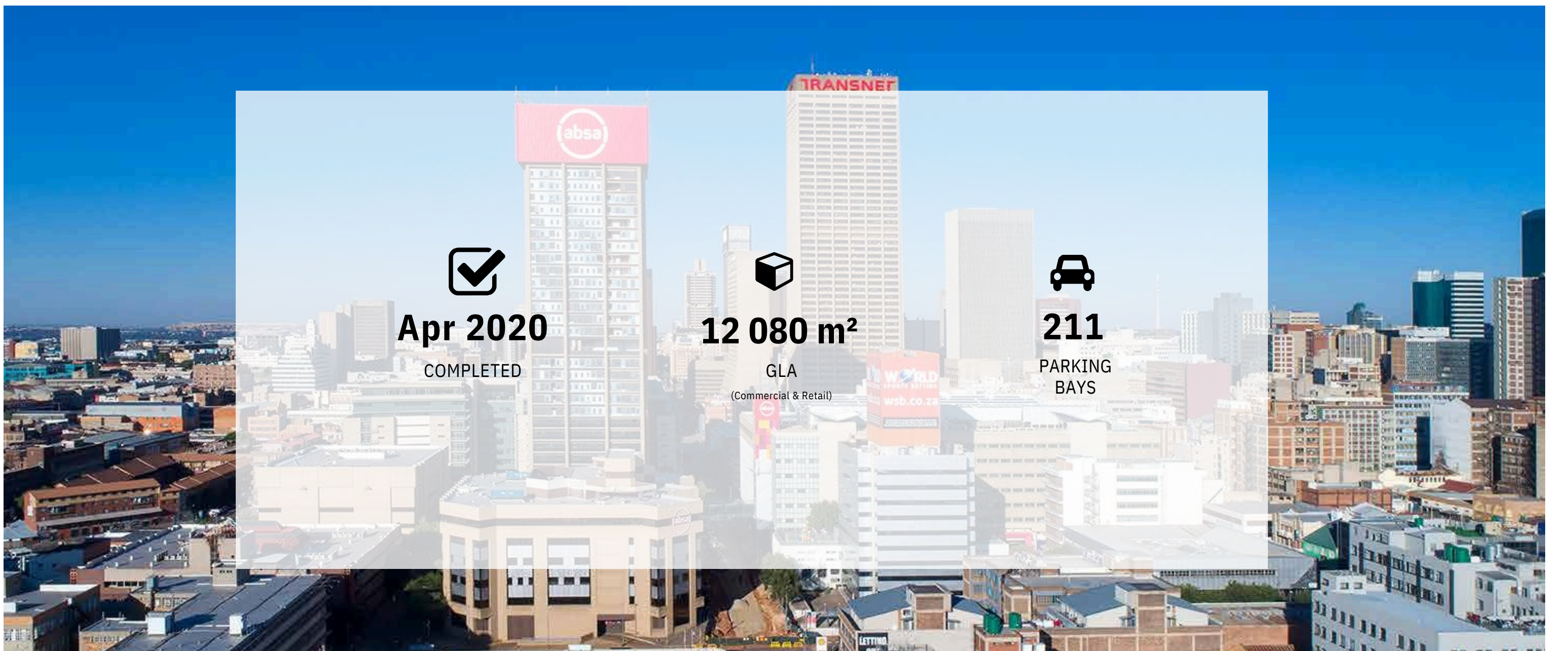
### Green, Sustainable & Cost-Efficient:

- 4-Star Green rated building
- Adaptive reuse reduces embodied carbon
- Energy-efficient systems
- Contributes to tenant ESG compliance & cost savings

### Urban Regeneration Impact:

- Part of a broader redevelopment initiative transforming the CBD
- Activated public square encourages foot traffic and vibrancy
- Mixed-use reduces isolated evening downtime in the precinct

A smarter workplace. A better employee experience. A stronger corporate presence.





## LOCALITY & ACCESS

### CONNECTED. CENTRAL. CONVENIENT.

Located in the heart of the Johannesburg CBD, Towers Main offers exceptional accessibility for employees, clients and partners.

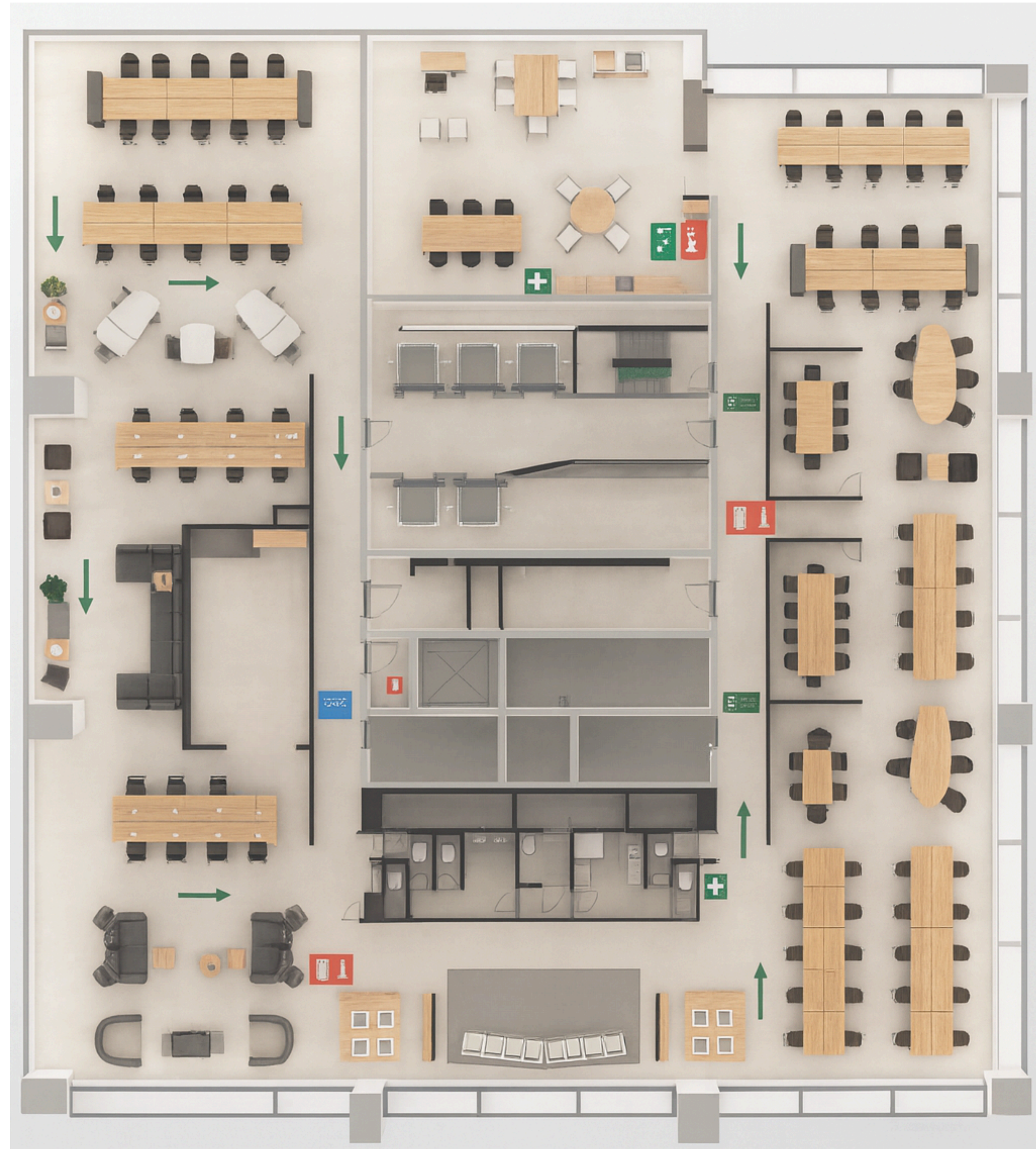
#### Location Advantages

- Prime CBD address surrounded by major corporate and financial institutions
- Direct access to the M1, M2 and key arterial routes
- Walking distance to Park Station (rail, Rea Vaya, taxis & long-distance buses)
- Connected to a broader regeneration node with strong precinct management
- Proximity to courts, banks, retail, hospitality and government departments
- Surrounded by upgraded public spaces and active city improvement zones

*Your teams stay connected.  
Your clients reach you easily.  
Your business stays central.*







# TOWERS MAIN

## POTENTIAL LAYOUT

Based on 1 000m<sup>2</sup>  
to create your ideal  
workplace





Winner in the mixed-use category of the 2020 SAPOA Awards. Towers Main also won the prestigious overall transformation award.



ORIGINALLY  
COMPLETED IN  
**1979**

## WELCOME TO TOWERS MAIN

An award-winning, 4-Star Green mixed-use landmark redefining CBD workspace.

Reimagined and reopened in 2020, Towers Main stands as a statement of modern urban regeneration, blending premium office floors with residential, retail, lifestyle amenities and a vibrant public square.

Strategically located at 160 Main Street, this landmark offers businesses a high-visibility address, excellent access, and the opportunity to secure an entire A-Grade office component across multiple contiguous floors.

## TOWERS MAIN AT A GLANCE

- ±10,000 m<sup>2</sup> A-Grade office space
- 9 contiguous office floors
- 4-Star Green rated building
- Vibrant mixed-use community with 518 residents
- Activated public square and on-site amenities
- Award-winning redevelopment (SAPOA Transformation Award)

Position your business in Johannesburg's premier CBD node.







**ENQUIRE TODAY**  
Kevin Kabi · 070 457 2238  
[kevin@ithembaproperty.co.za](mailto:kevin@ithembaproperty.co.za)  
  
Danie de Beer · 079 505 0277  
[danie@atterbury.co.za](mailto:danie@atterbury.co.za)

