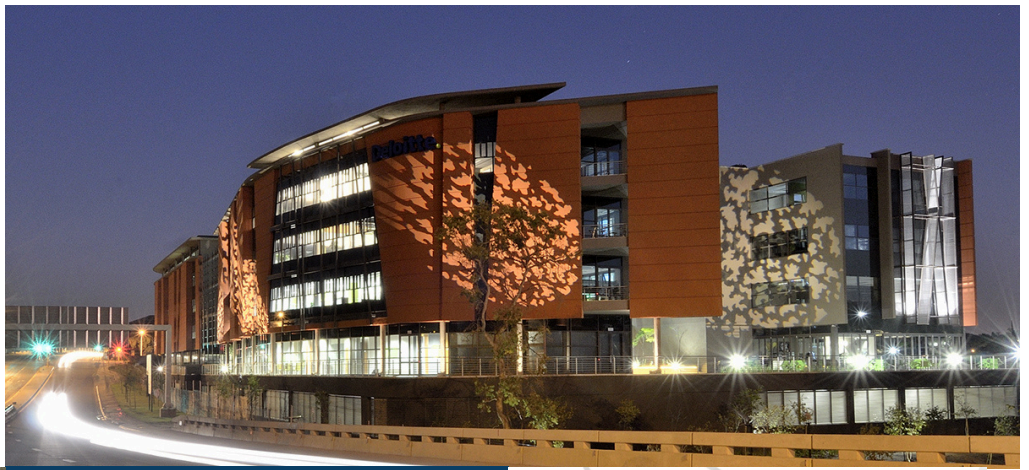


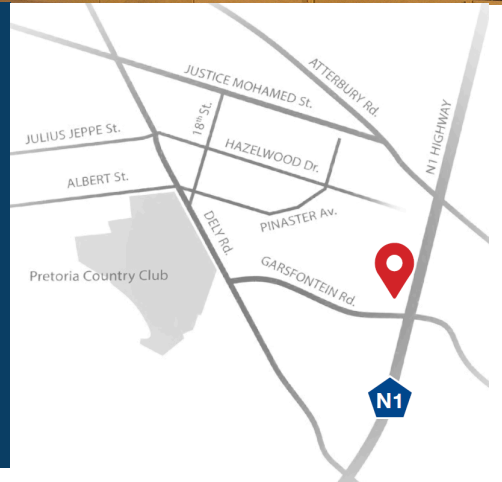
RIVERWALK

OFFICE PARK

PRETORIA



MODERN,
STYLISH
&
STATE OF
THE ART



Prime Menlyn Office Space – Riverwalk Office Park

Elevate your business at Riverwalk Office Park, a prestigious address just off the N1 Garsfontein offramp in Menlyn. This prime location offers unparalleled visibility and accessibility, placing your business at the heart of Pretoria's thriving commercial hub. Riverwalk boasts a distinguished tenant mix of blue-chip multinationals, creating a dynamic and professional environment.

Benefit from 24-hour security, ample parking, and modern infrastructure designed to support your business needs. We offer flexible, built-to-suit solutions, allowing you to customise your space to perfection. Enjoy full amenities within the building, along with the convenience of being close to major shopping centers, transportation nodes, and the N1 highway.

Riverwalk Office Park is ideal for startups, established businesses, and companies seeking a high-profile presence in a sought-after business node. Join our esteemed tenant community and experience the Riverwalk advantage. Contact us today to discuss your leasing requirements and secure your place in this prime Menlyn location.



GLA
16 200 m²

COMPLETED
2012

PARKING RATIO
4.4



OFFICE SPACE AVAILABLE

	North	South
Ground Floor		307m ²

Inspired by Atterbury

www.atterbury.co.za

Contact Zandri Wells
+27 82 772 8131

zandri@atterbury.co.za

