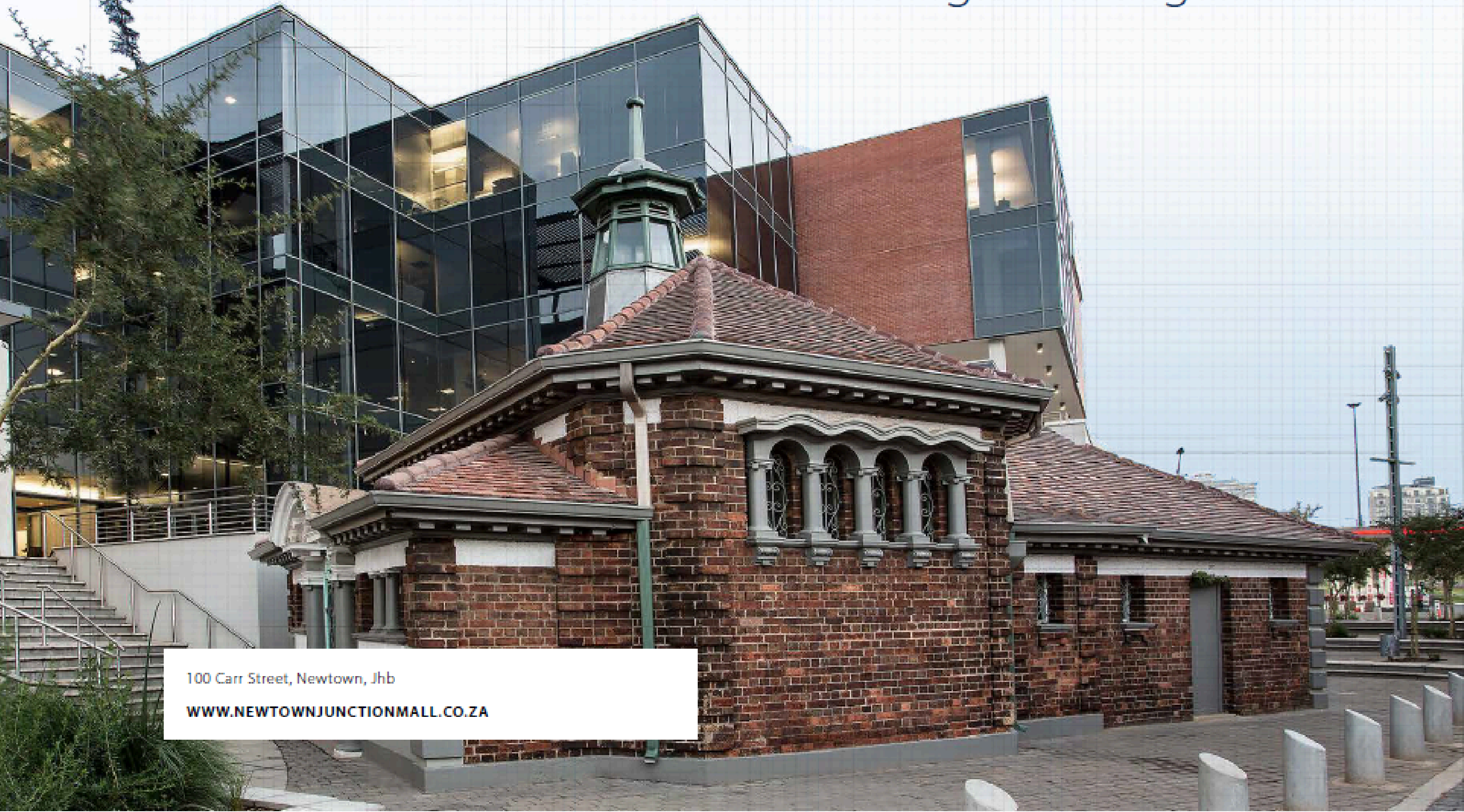
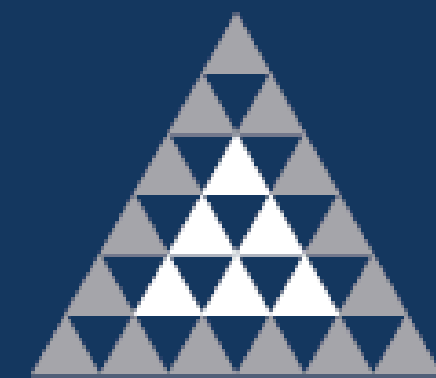


# Work, Shop, Arts & Entertainment in Johannesburg's Bustling CBD



NEWTOWN  
majestic

JOHANNESBURG GAUTENG



ATTERBURY

*It's a matter of association*

- ▲ ABOUT ATTERBURY..... 1
- ▲ LOCALITY & ACCESS ..... 2
- ▲ NEWTOWN MAJESTIC..... 3
  - ▶ ABOUT ..... 5
  - ▶ FLOOR PLANS..... 6

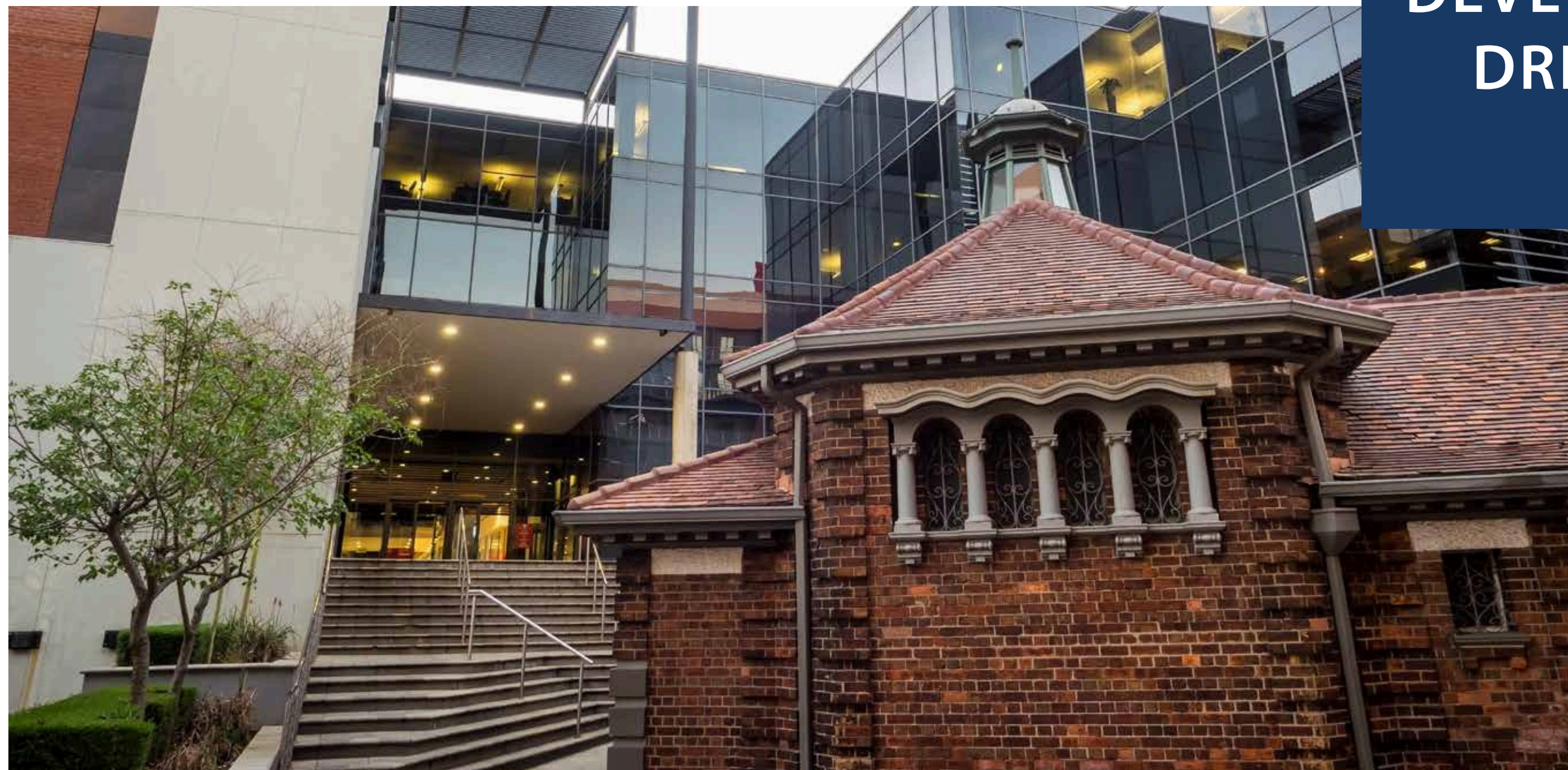


# TABLE OF CONTENTS





## MASTER PLAN: DEVELOPING DREAMS



**Atterbury specializes in creating meticulously crafted environments tailored to our tenants, clients, partners, and investors.**

As a dynamic real estate development, investment, and management company, we focus on prime mixed-use, commercial, retail, and industrial properties. Our roots in South Africa have blossomed into a pan-African and European presence.

Atterbury thrives on cultivating enduring relationships and fostering mutually advantageous partnerships. Our progressive and collaborative corporate culture drives us forward.

Sustainability is at the core of our ethos, permeating every aspect of our work. With an adept team, we manage pivotal connections with leading retailers, corporations, businesses, and brokers. By aligning with exceptional employees, partners, and suppliers, we ensure collective prosperity.

At Atterbury, we believe in a holistic vision that transcends individual components, creating a whole greater than the sum of its parts.



LOCALITY  
& ACCESS





Heritage building  
converted into  
**state-of-the-art offices**

Majestic Building, 141 Lilian Ngoyi Street,

Cnr. Mariam Makeba, Newtown

[ATTERBURY.CO.ZA/PORTFOLIO-ITEMS/](https://www.atterbury.co.za/portfolio-items/newtown-junction-2/)

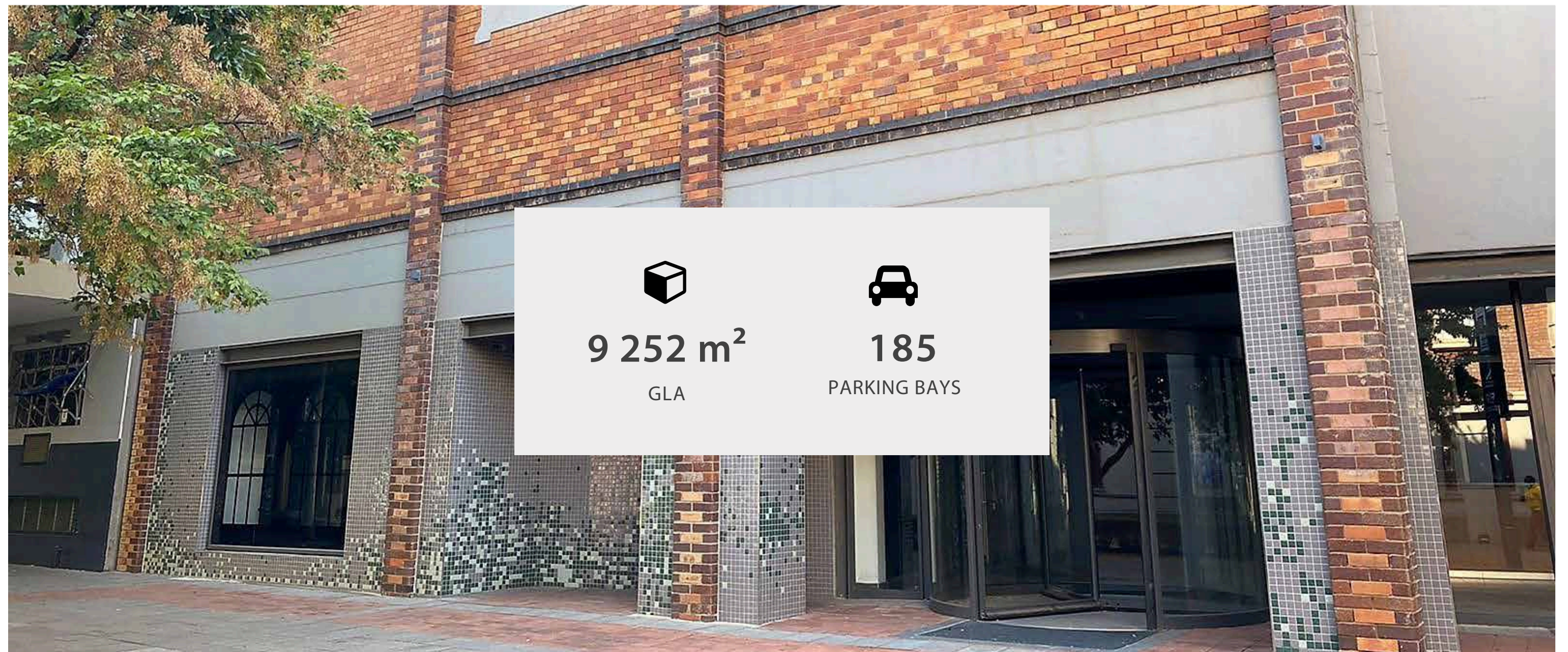
[NEWTOWN-JUNCTION-2/](https://www.atterbury.co.za/portfolio-items/newtown-junction-2/)





The Majestic building, located opposite the iconic Market Theatre, boasts more than 9 063 m<sup>2</sup> of prime office space and forms part of the mixed-use development of the Newtown Precinct.

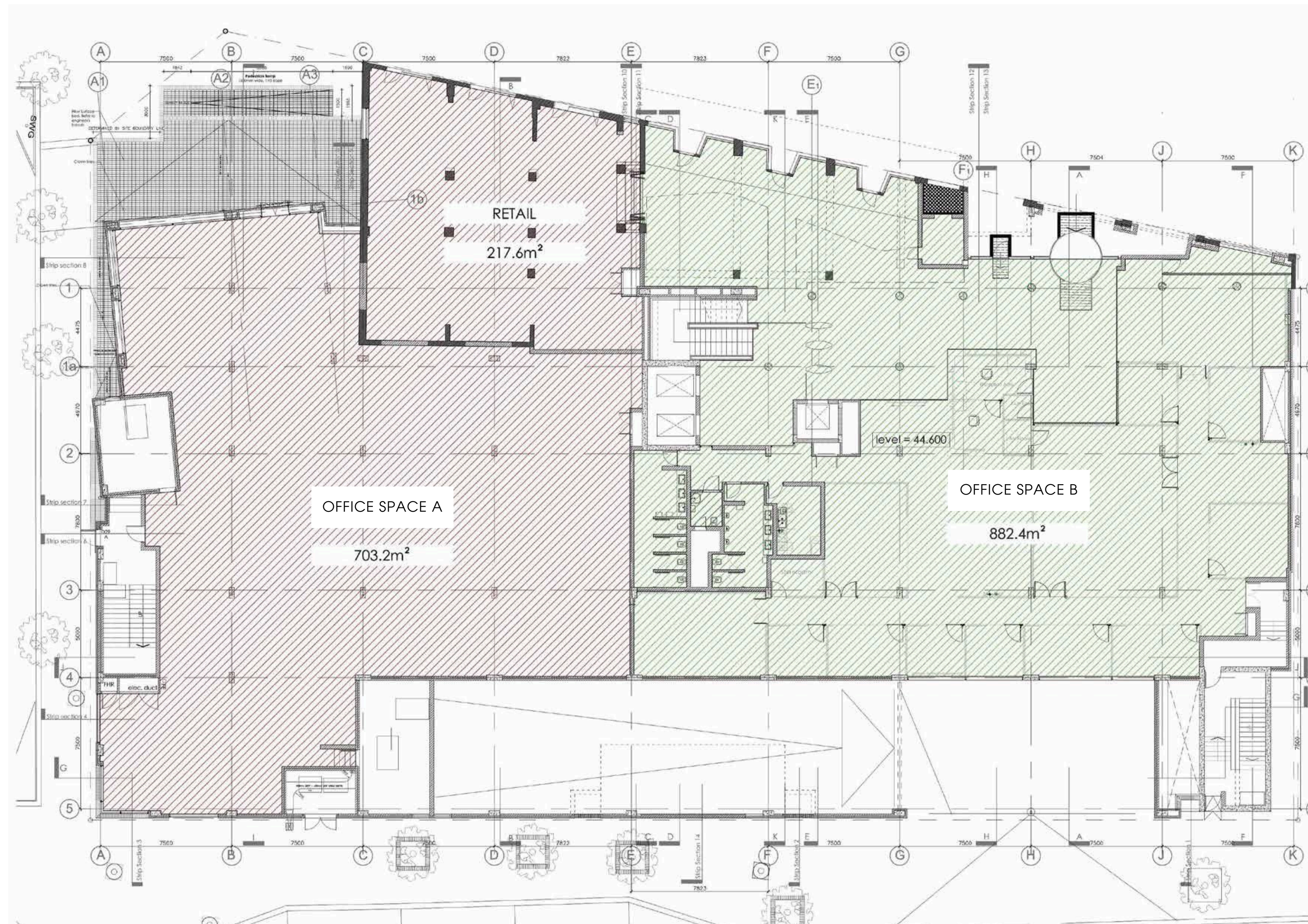
The building is predominately occupied by Richfield College (115m<sup>2</sup> of Part B Ground Floor, 104m<sup>2</sup> on the 1st Floor, entire 2nd Floor, 3rd & 4th Floor), Johannesburg Housing Company (part A Ground Floor). Law for All, (295m<sup>2</sup> of Part B Ground Floor).

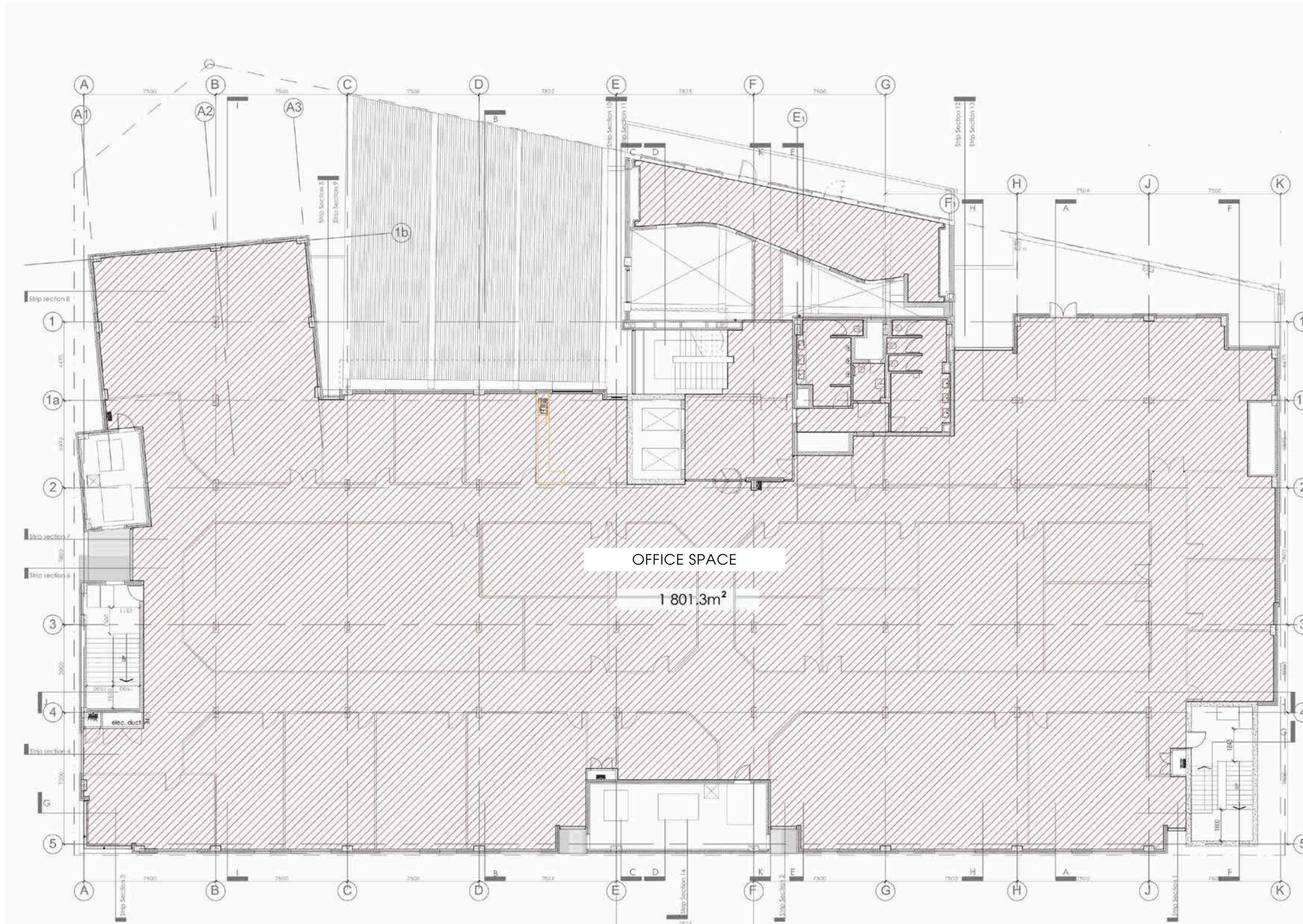




# GROUND FLOOR

- OFFICE SPACE A  
703 m<sup>2</sup>
- OFFICE SPACE B  
882.4 m<sup>2</sup>
- RETAIL  
217.6 m<sup>2</sup>





**FIRST  
FLOOR**

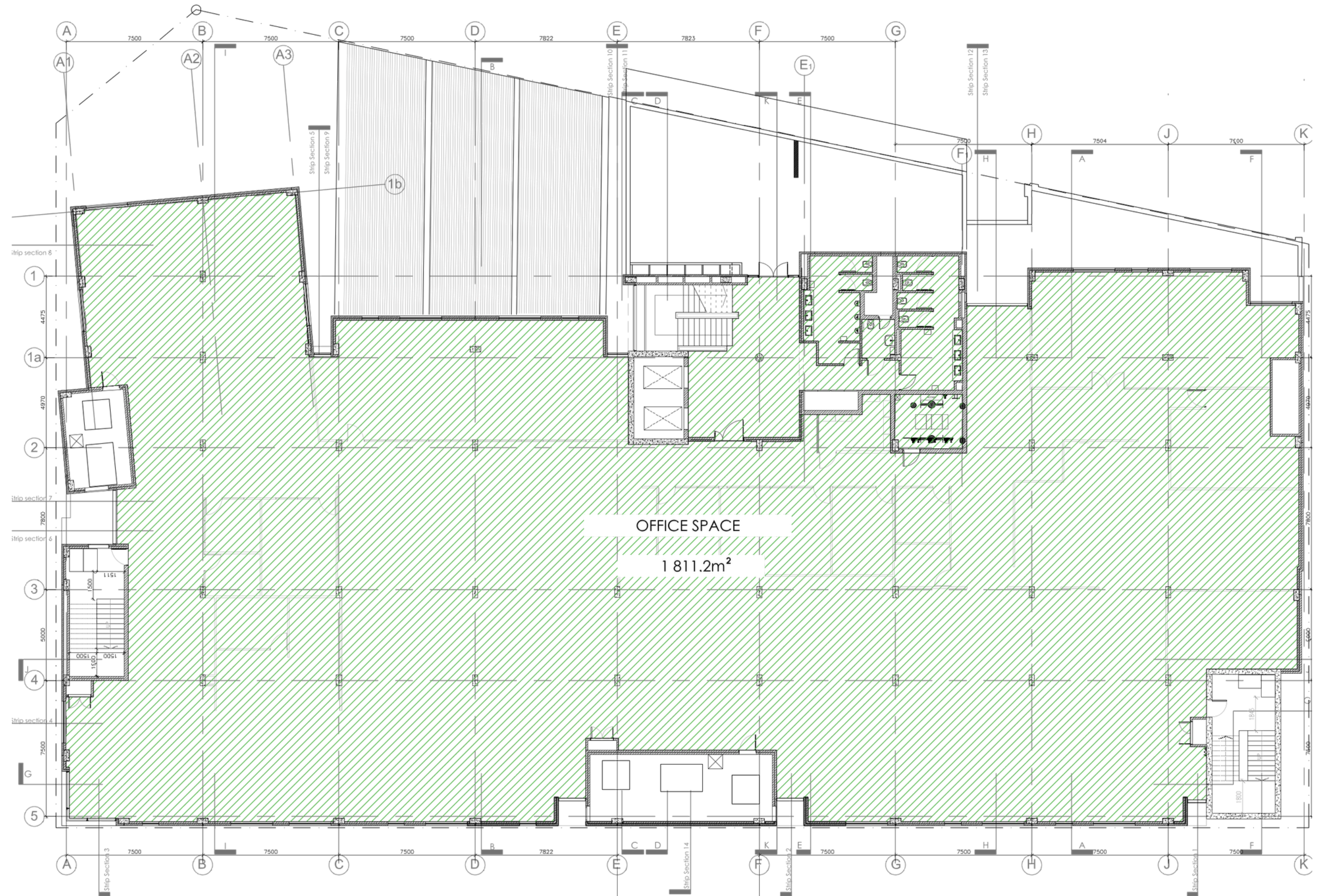
OFFICE SPACE  
1 801.3 m<sup>2</sup>

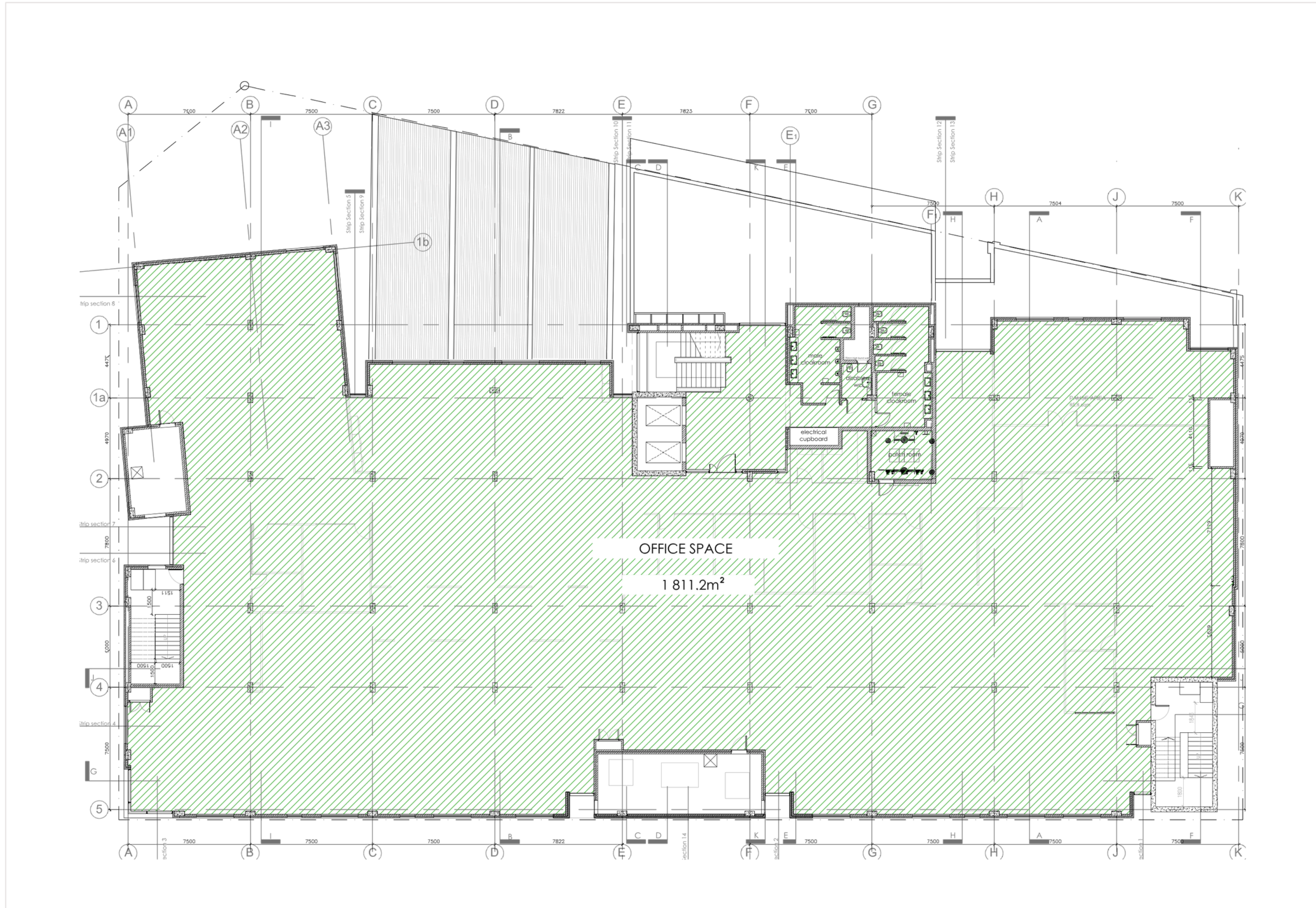




# SECOND FLOOR

OFFICE SPACE  
1 811.2 m<sup>2</sup>





**THIRD  
FLOOR**

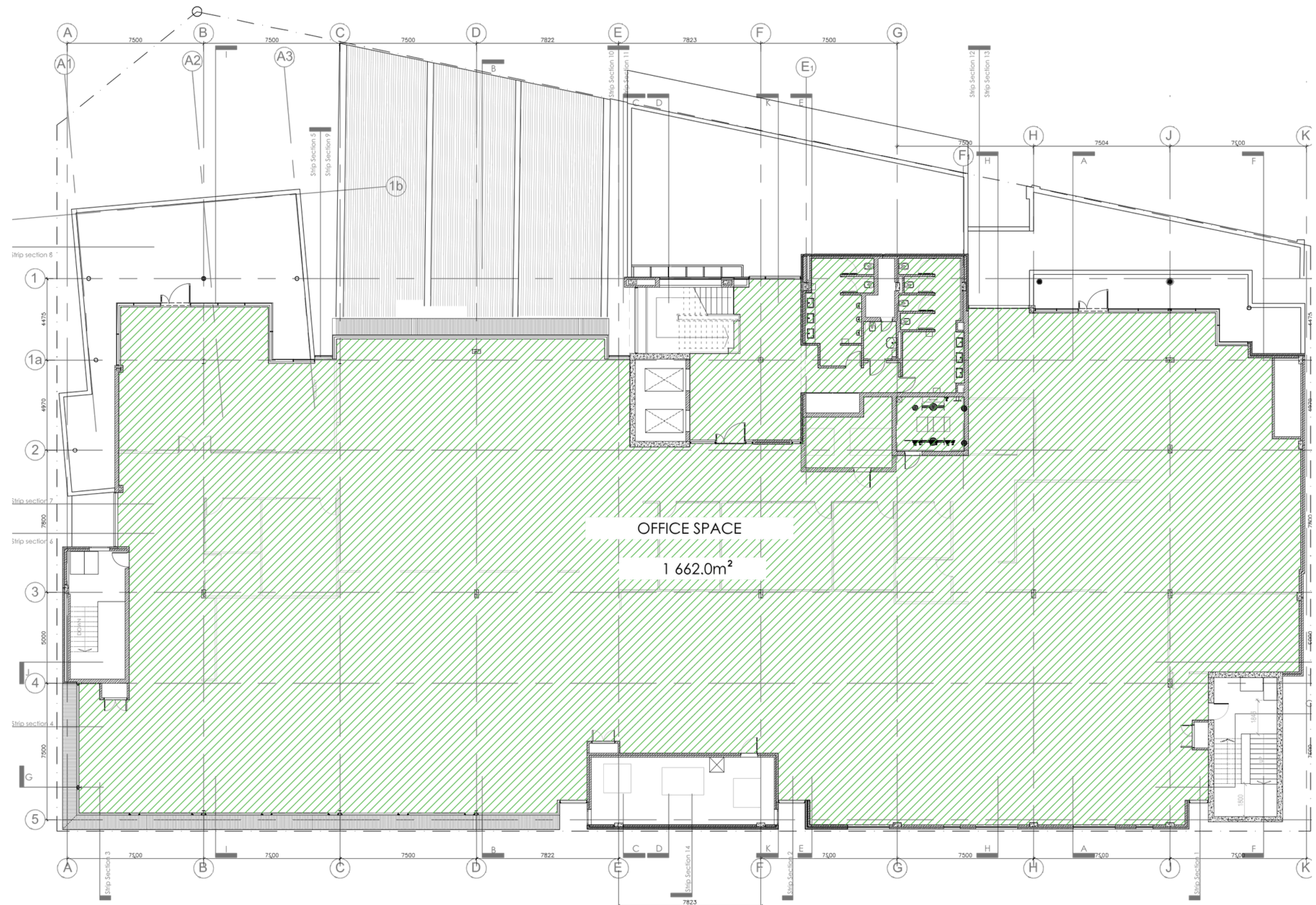
OFFICE SPACE  
1 811.2 m<sup>2</sup>





# FOURTH FLOOR

OFFICE SPACE  
1 662.0 m<sup>2</sup>





PRETORIA OFFICE

Die Klubhuis 2nd Floor C/o 18th Street & Pinaster Ave Hazelwood, Pretoria

Tel: +27 12 471 1600

[enquiries@atterbury.co.za](mailto:enquiries@atterbury.co.za)

[atterbury.co.za](http://atterbury.co.za)