

COMMERCIAL SPACE

Distinct Competitive Advantage



RIVERWALK

OFFICE PARK

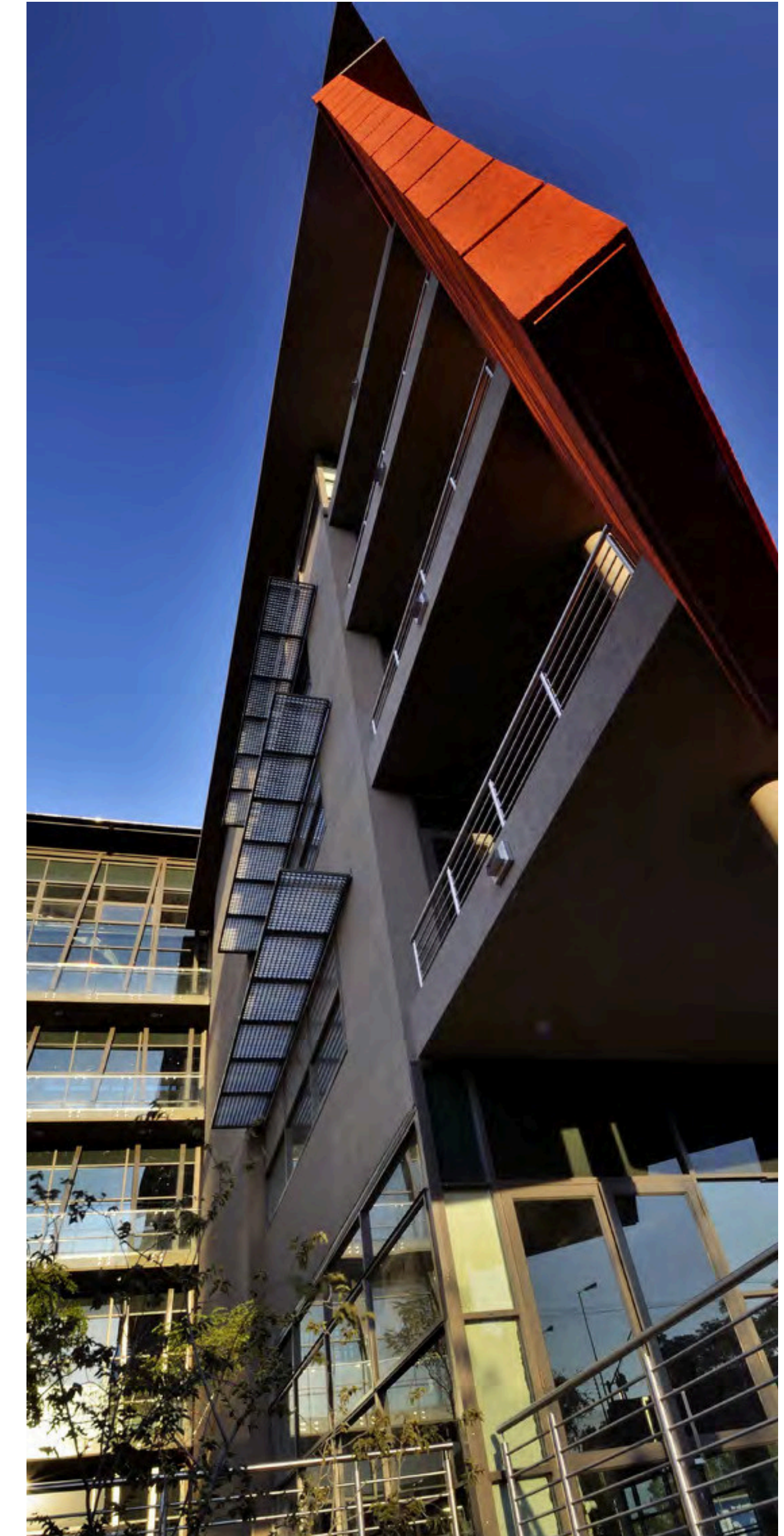
PRETORIA EAST GAUTENG

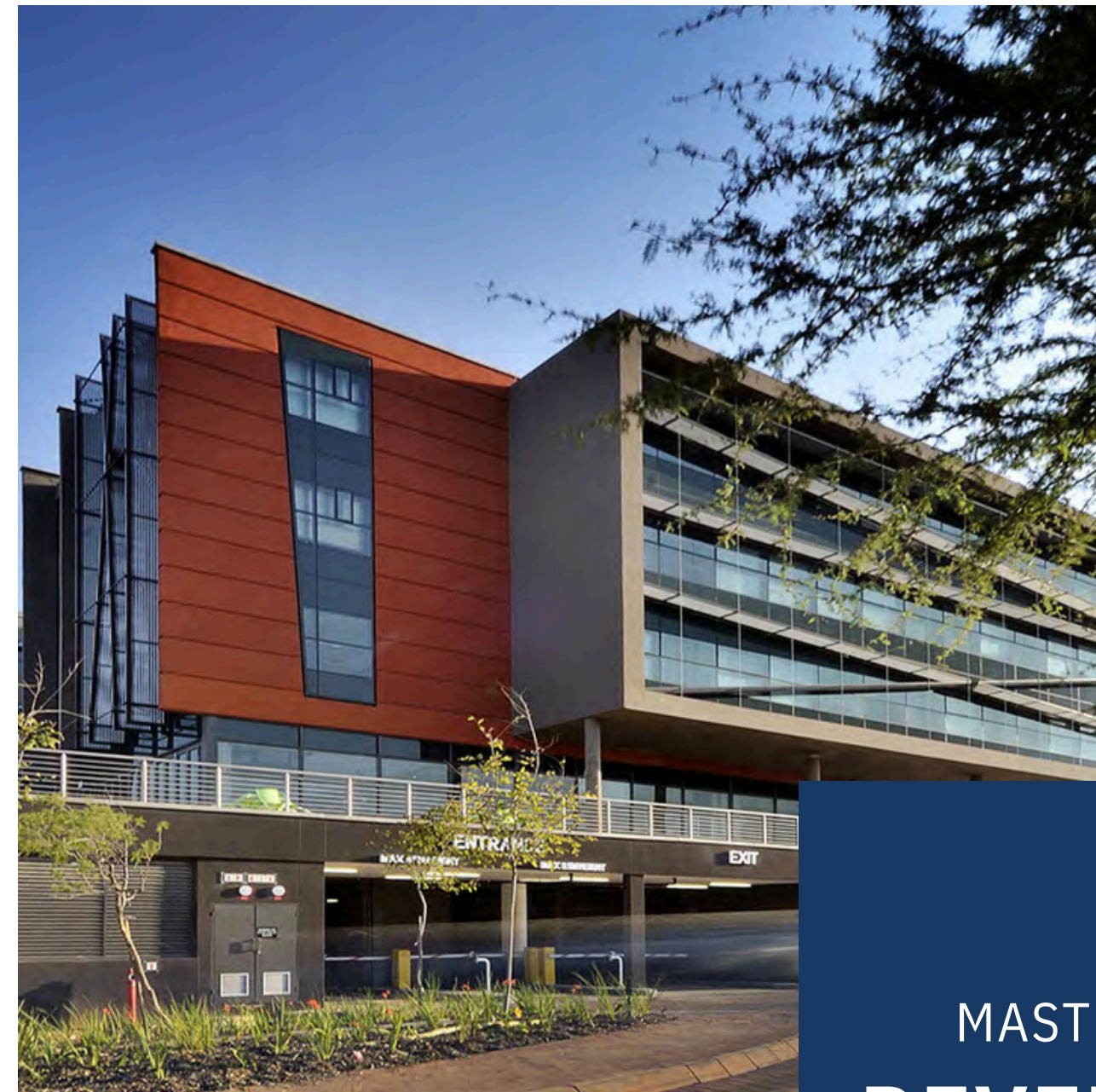


ATTERBURY

It's a matter of association

- ▲ ABOUT ATTERBURY..... 1
- ▲ LOCALITY & ACCESS..... 2
- ▲ INTRODCUTION: RIVERWALK OFFICE PARK..... 3
- ▲ PHOTGRAPHIC LIBRARY..... 4
- ▲ FLOOR PLANS..... 5
 - ▶ GROUND FLOOR..... 6
 - ▶ FIRST FLOOR..... 6
 - ▶ SECOND FLOOR..... 7
 - ▶ THIRD FLOOR..... 8
 - ▶ FOURTH FLOOR..... 9





MASTER PLAN: **DEVELOPING DREAMS**

Atterbury specializes in creating meticulously crafted environments tailored to our tenants, clients, partners, and investors.

As a dynamic real estate development, investment, and management company, we focus on prime mixed-use, commercial, retail, and industrial properties. Our roots in South Africa have blossomed into a pan-African and European presence.

Atterbury thrives on cultivating enduring relationships and fostering mutually advantageous partnerships. Our progressive and collaborative corporate culture drives us forward.

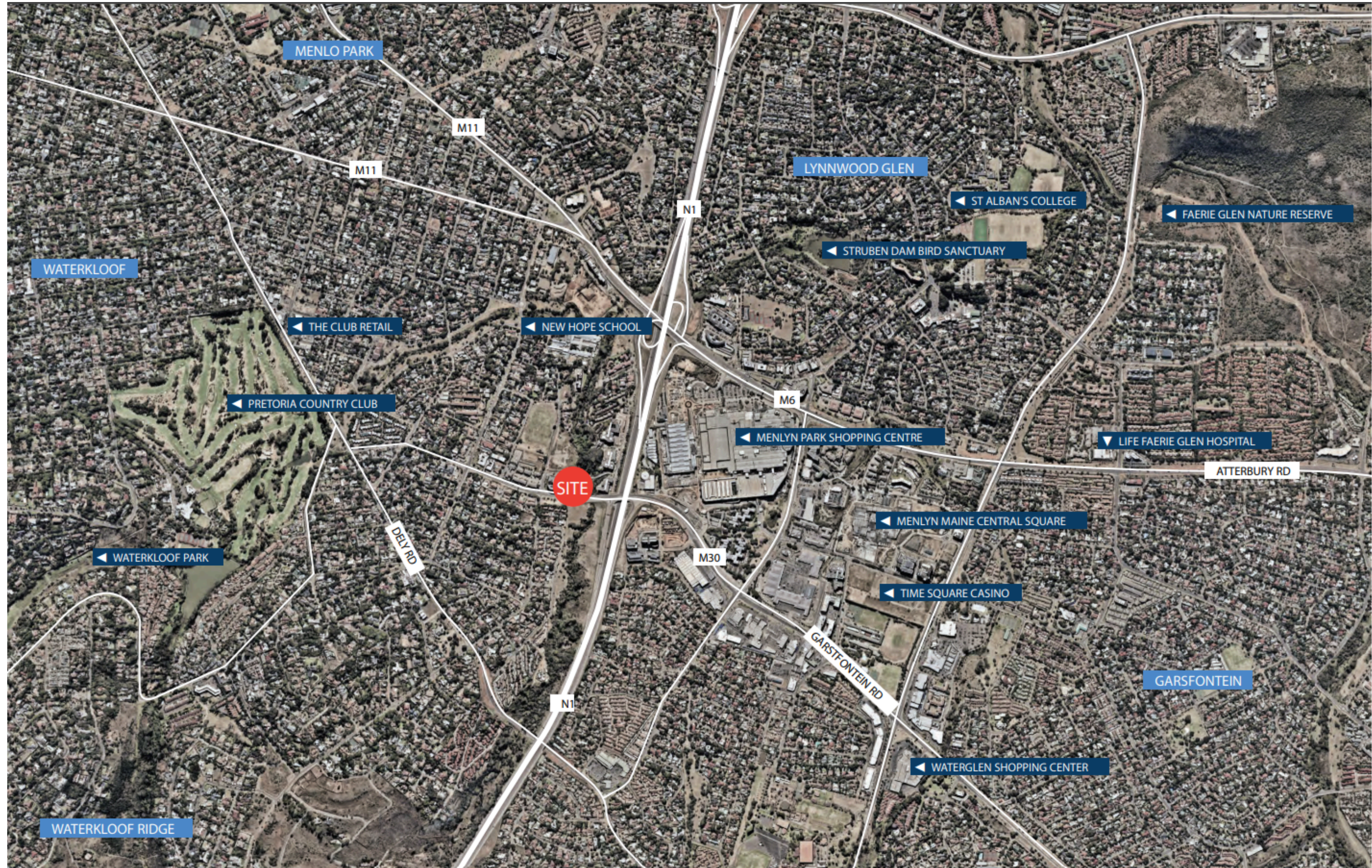
Sustainability is at the core of our ethos, permeating every aspect of our work. With an adept team, we manage pivotal connections with leading retailers, corporations, businesses, and brokers. By aligning with exceptional employees, partners, and suppliers, we ensure collective prosperity.

At Atterbury, we believe in a holistic vision that transcends individual components, creating a whole greater than the sum of its parts.



RW


LOCALITY
& ACCESS





Consisting of two buildings with two wings totalling approximately 16 200 m², this site is situated on the corner of Matroosberg and Garsfontein Roads, alongside the Garsfontein Road offramp from the N1 Highway - making this location an ideal workplace.

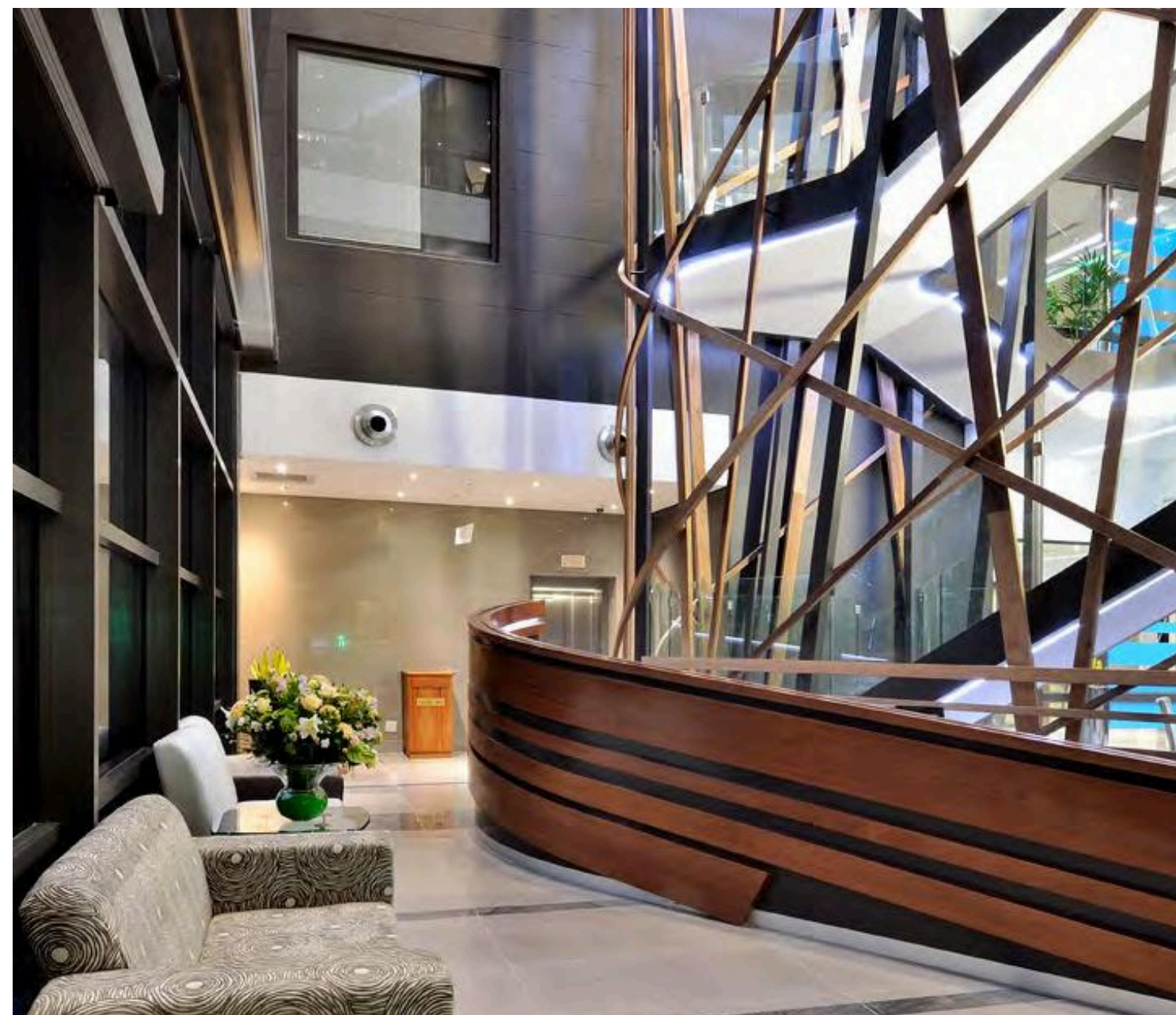
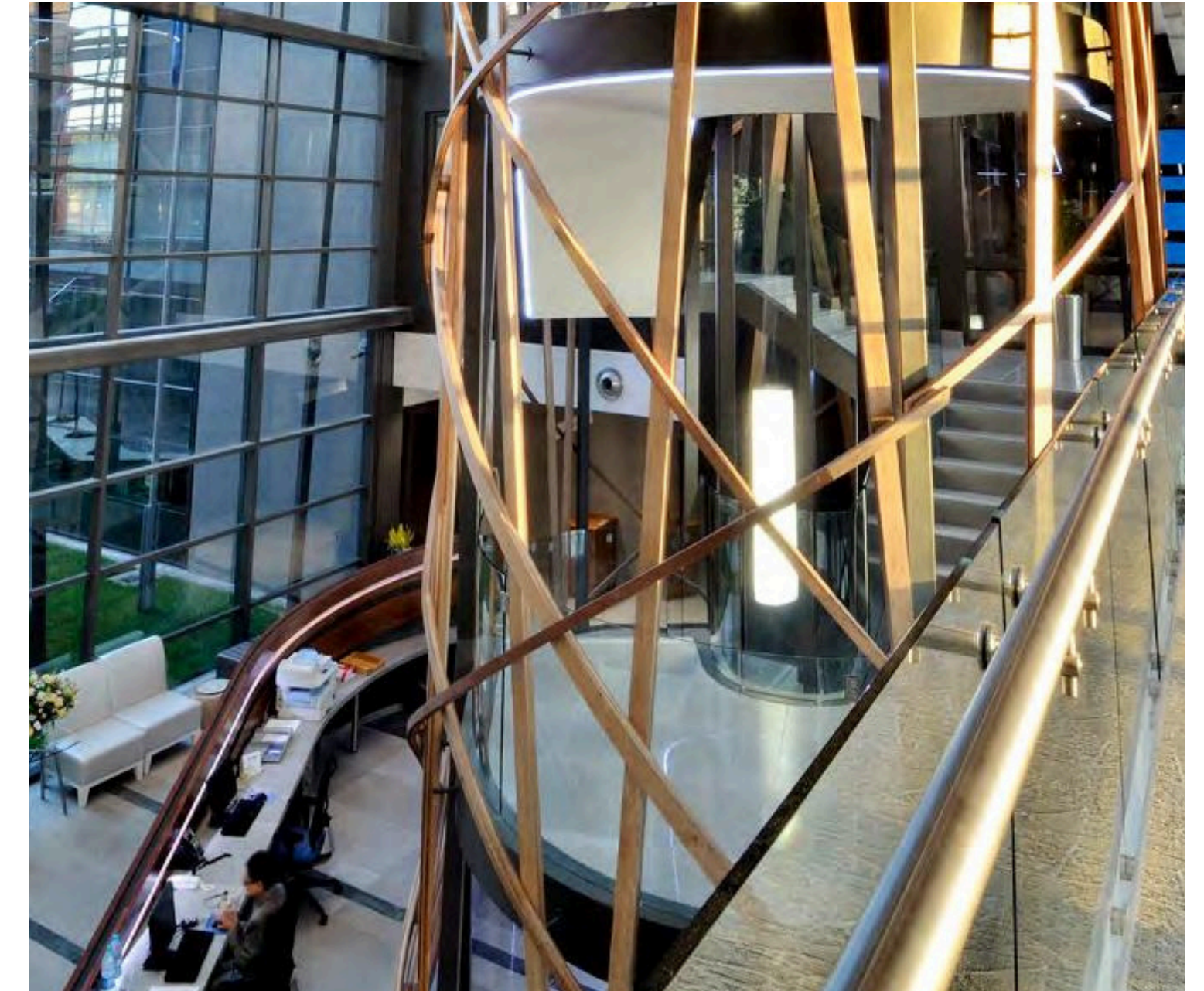
This commercial office park is within a convenient walking distance to the Gautrain Bus stops situated on Garsfontein road and Menlyn taxi ranks ideal for tenants making use of public transportation.

Riverwalk Office Park is situated close to amenities such as Menlyn Park Shopping Centre, the new Menlyn Maine Central Square Shopping Centre, SARS and the Regency apartments, making Riverwalk Office Park the ideal business address for your premium business.

 **16 200 m²**
GLA

 **2012**
COMPLETED

 **4.4**
PARKING RATIO



RIVERWALK

OFFICE PARK

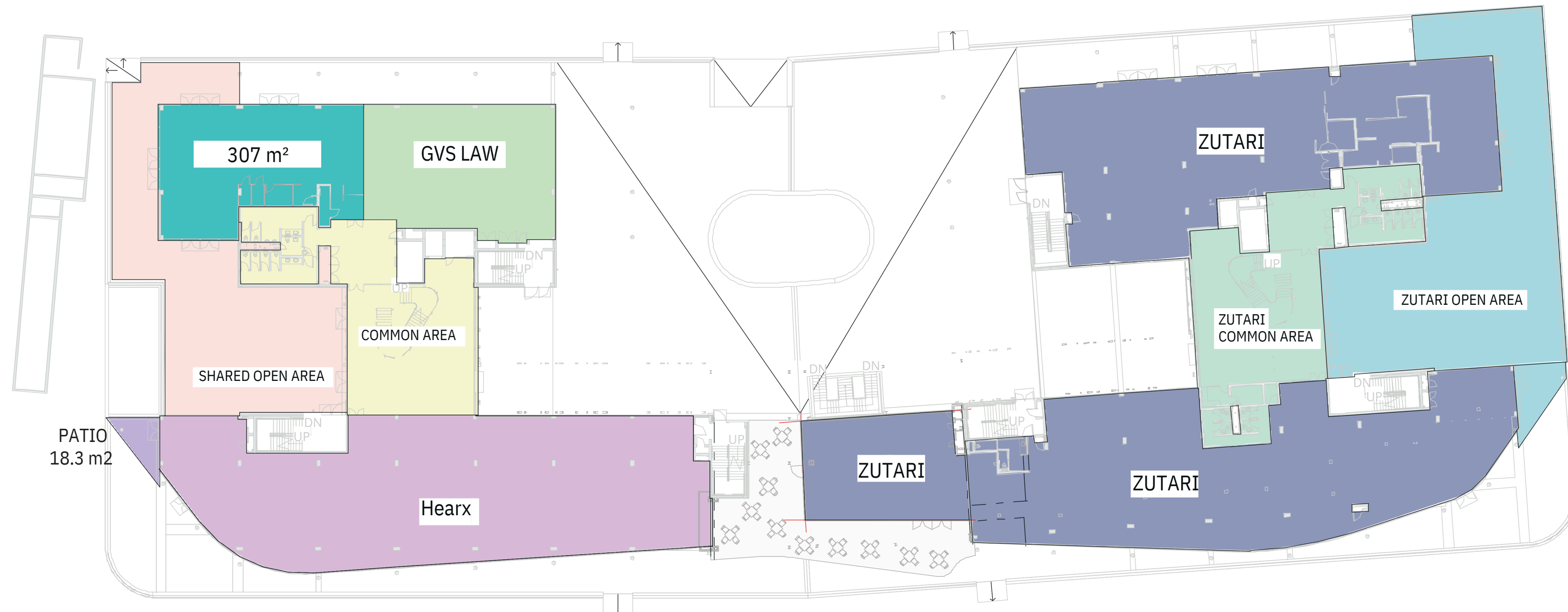


**PHOTOGRAPHIC
LIBRARY**



RW

GROUND FLOOR



BLOCK A

BLOCK B





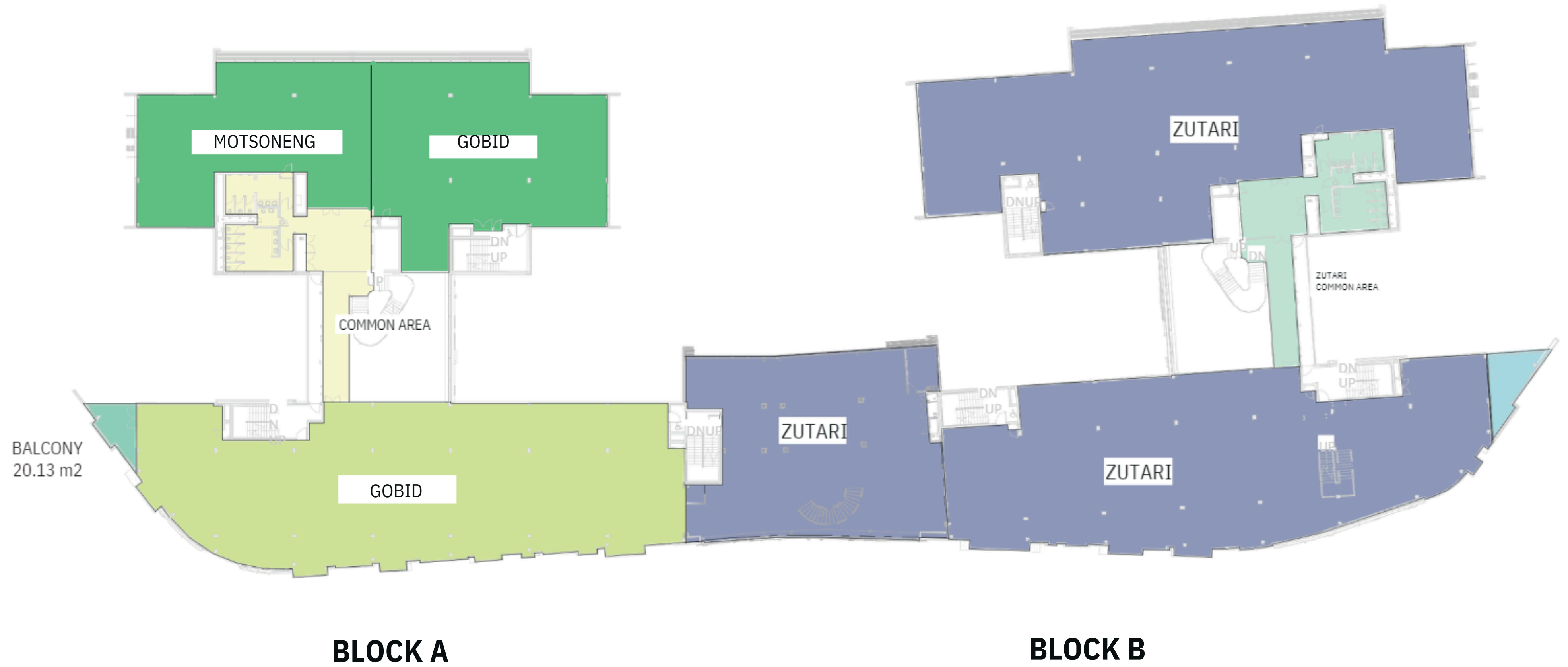
RW

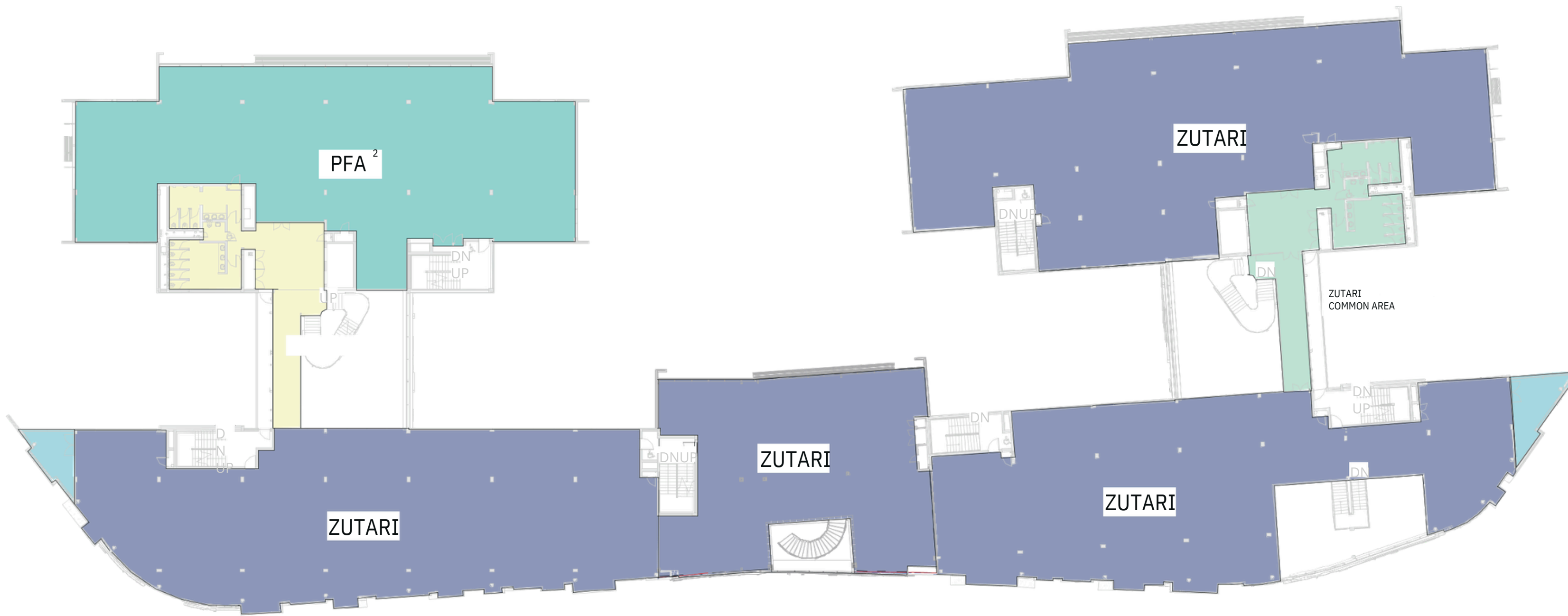
FIRST FLOOR



RW

SECOND FLOOR
FLOOR





BLOCK A

BLOCK B

RW

**THIRD
FLOOR**



RW

FOURTH
FLOOR



BLOCK A

BLOCK B



PRETORIA OFFICE

Die Klubhuis 2nd Floor C/o 18th Street & Pinaster Ave Hazelwood, Pretoria

+27 12 471 1600, enquiries@atterbury.co.za

atterbury.co.za